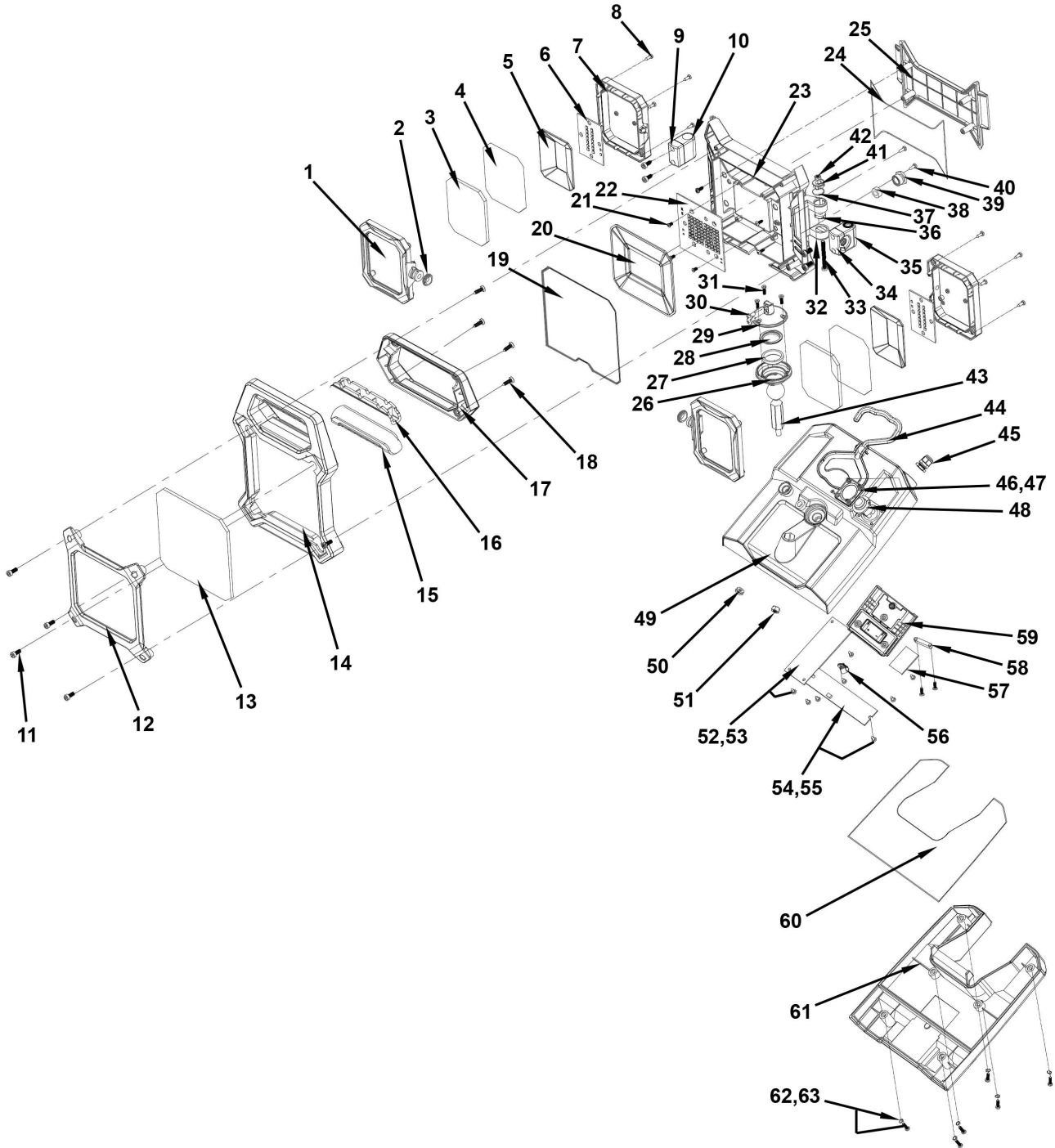




Parts Information:  
Cordless 20V SMD LED 4000lm Work Light  
- Body Only  
Model No: CP20VWL



**NOTE:** It is our policy to continually improve products and as such we reserve the right to alter data, specifications and component parts without prior notice. There may be alternative versions of this product, please contact us should you require this information.

**IMPORTANT:** No liability is accepted for incorrect use of product. Spare parts must be fitted by a competent person

**WARRANTY:** Guarantee is 12 months from purchase date, proof of which will be required for any claim.

Sealey Group, Kempson Way, Suffolk Business Park, Bury St Edmunds, Suffolk. IP32 7AR



01284 757500



01284 703534



sales@sealey.co.uk



www.sealey.co.uk



Parts Information:  
**Cordless 20V SMD LED 4000lm Work Light  
- Body Only  
Model No: CP20VWL**

Item	Part No.	Description
1	CP20VWL.01	Lamp Cover
2	CP20VWL.02	Rubber Seal Ring
3	CP20VWL.03	Lamp Glass (A)
4	CP20VWL.04	Rubber Seal Ring
5	CP20VWL.05	Reflector
6	CP20VWL.06	LED Board (A)
7	CP20VWL.07	Lamp Body
8	CP20VWL.08	Self Tapping Screw ST2.9 x 10
9	CP20VWL.09	Hinge Cover (A)
10	CP20VWL.10	Hinge (A)
11	MSP410.S	Machine Screw Pan Head Phillips M4 X 10mm
12	CP20VWL.12	Decorative Cover
13	CP20VWL.13	Lamp Glass (B)
14	CP20VWL.14	Lamp Body Cover
15	CP20VWL.15	Rubber Handle Cover
16	CP20VWL.16	Handle Cover
17	CP20VWL.17	Rear Cover for Lamp Body Cover
18	CP20VWL.18	Self Tapping Screw ST2.9 x 12
19	CP20VWL.19	Waterproof Plate (A)
20	CP20VWL.20	Reflector
21	MSP36.S	Machine Screw Pan Head Phillips M3 X 6mm
22	CP20VWL.22	LED Board (B)
23	CP20VWL.23	Lamp Body
24	CP20VWL.24	Waterproof Plate (B)
25	CP20VWL.25	Rear Cover for Lamp Body
26	CP20VWL.26	Bottom Cover for Rotating Shaft
27	CP20VWL.27	Rubber Seal Ring
28	CP20VWL.28	Nylon Ring
29	CP20VWL.29	Top Cover for Rotating Shaft
30	MSP410.S	Machine Screw Pan Head Phillips M4 X 10mm
31	MSC410.S	Csk Phillips Machine Screw M4 X 10 Zinc
32	CP20VWL.32	Fixed Seat

Item	Part No.	Description
33	CP20VWL.33	Fixed Seat Bolt M4 x 50
34	CP20VWL.34	Hinge Cover (B)
35	CP20VWL.35	Hinge (B)
36	CP20VWL.36	Gear Shaft
37	CP20VWL.37	Rubber Plate
38	CP20VWL.38	Waterproof Seal Ring
39	CP20VWL.39	Wire Grip
40	MSP412.S	Machine Screw Pan Head Phillips M4 X 12mm
41	CP20VWL.41	Cover for Fixing Nut
42	SN4.S	Steel Nut M4 Zinc
43	CP20VWL.43	Rotating Shaft
44	CP20VWL.44	Hook
45	CP20VWL.45	Wire Grip
46	CP20VWL.46	Switch Plate
47	CP20VWL.47	Self Tapping Screw ST2.5 x 8
48	CP20VWL.48	Switch
49	CP20VWL.49	Upper Base
50	CP20VWL.50	Rubber Seal Ring
51	SN6.S	Steel Nut M6 Zinc
52	CP20VWL.52	PCB
53	CP20VWL.53	Self Tapping Screw ST2.9 x 8
54	CP20VWL.54	Driver Board
55	CP20VWL.55	Self Tapping Screw ST2.9 x 8
56	CP20VWL.56	Cable Clamp
57	CP20VWL.57	Switch PCB
58	CP20VWL.58	Tension Disc
59	CP20VWL.59	Battery Connection Plate
60	CP20VWL.60	Waterproof Plate (C)
61	CP20VWL.61	Lower Base
62	CP20VWL.18	Self Tapping Screw ST2.9 x 12
63	CP20VWL.63	Rubber Seal Ring

**NOTE:** It is our policy to continually improve products and as such we reserve the right to alter data, specifications and component parts without prior notice. There may be alternative versions of this product, please contact us should you require this information.

**IMPORTANT:** No liability is accepted for incorrect use of product. Spare parts must be fitted by a competent person

**WARRANTY:** Guarantee is 12 months from purchase date, proof of which will be required for any claim.

**Sealey Group**, Kempson Way, Suffolk Business Park, Bury St Edmunds, Suffolk. IP32 7AR



01284 757500



01284 703534



sales@sealey.co.uk



www.sealey.co.uk