



Connect with Skipper



## A world of connectivity

**Beautiful. Intelligent. Modular.** We believe innovation can open up a world of connections. Our approach to delivering market leading product designs, is to constantly push the boundaries and set ourselves goals to improve on the ordinary, setting new standards for the workplace and the environment.

We appreciate the opportunity for you to join us on this journey, to increase our social responsibility and raise those standards, for the future of everyone.

Modular solutions for tomorrow's workplace. Take your workplace environment into the future with Skipper.

Over 20 years of innovation are behind our unique modular and multi-functional range of products. Fully recyclable and environmentally superior, our truly modular solutions have been developed for industries across the globe, including outside, inside, waste & safety management, public guidance and cleaning & hygiene.

Our products keep you ahead of the curve, increasing operational efficiencies, enhancing your brand, ensuring health and safety compliance and achieving your environmental goals.

**For businesses that look ahead, the future has arrived today**





EXTERNAL



Skipper is an award-winning design, created to inspire and motivate use for safety in any outside environment. With modularity built into its DNA, no other system can boast so much connectivity and versatility. Used and trusted by industry professionals worldwide as the system of choice, it's so easy to see why they get so attached.

Soft-touch locking button prevents tape from spooling out in windy conditions.



No other system can offer so much connectivity and modularity, a truly pioneering design.

## Connecting industries worldwide

**The Skipper barrier system.** Skipper is the key to a complete barrier system. As well as attaching to Skipper's own cones and posts, you can attach our durable, 9m (30ft) retractable Skipper unit to almost any standard traffic cone, worldwide. The high specification materials, including fabric webbing and soft-touch areas for improved grip, make the Skipper unit highly robust and dependable.

The versatile and adaptable unit is used across a wide range of industries, from construction to airports and shipping, to events, retail, facilities management and so many more. Skipper is the original, market leading solution and the choice of health and safety professionals across the world.



TAPE OPTIONS: red & white, black & yellow, green & white, blue & white, black & yellow 'CAUTION', red & white 'DANGER'



Skipper unit			
Height 240mm 9.4"	Width 145mm 5.7"	Depth 145mm 5.7"	Weight 795g 28oz



One of the most versatile products in the range, robust, durable and fit for all weather.



### Created to connect

**The Skipper post and base.** A post and base system to perfectly complement the Skipper unit. Its sleek, professional design looks sublime in any environment, both indoors and outdoors. Sold as a two-part system for improved transport and storage, the base can simply be filled with water or sand for improved strength and stability, then the post is twist-locked into position. The Skipper unit or post & base cap attach to the top of the post with a secure, snap fit. The modular waste management range can also be attached to the post via the post & base collar, making it one of the most versatile products in the Skipper range.



Skipper post & base system			
Height	Width	Depth	Weight
1000mm	500mm	500mm	2.3kg
39.4"	19.7"	19.7"	5.1lbs



**The post & base cap.** When a barrier solution is not needed, this cap can give the post a more complete look and also provide an alternate aesthetic. Simply affix the Skipper A4 sign holder to the top to provide an effective signage system. Also can be used with the Skipper road cone.



Skipper post & base cap			
Height	Width	Depth	Weight
150mm	90mm	90mm	205g
5.9"	3.5"	3.5"	7.2oz



## A connection with a twist

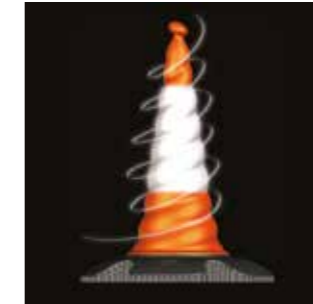
Skipper's iconic road cone has created a revolution, worldwide. This unique two-piece cone outperforms its competitors in all areas. Its patent protected design features an incorporated helix, which deflects wind away and adds to the cone's stability.

The base is designed to facilitate an optional weight ring, providing even more ballast and reducing the need to double stack, while the innovative glass bead sleeve has greater reflectivity than prismatic alternatives and is robust and durable.

With a wide spectrum of applications, from airports and traffic control to industrial and construction operations, the Skipper road cone can transform your work environment.



The Skipper road cone's helix design greatly improves on wind deflection compared to standard road cones, meaning greater stability in challenging environments.



The Skipper cone's light reflectivity is twice as strong as a standard cone.



Skipper road cone			
Height	Width	Depth	Weight
750mm	555mm	555mm	5.4kg
29.5"	21.9"	21.9"	12lbs



*With magnetic and wall options, they are the go-to attachments for everyone's system.*

## Joined up thinking

The Skipper wall and magnetic support brackets are hugely practical accessories for the Skipper unit and ideal for situations where using a cone or post is not appropriate. The bracket is available in two versions, a wall version which can be screwed into place for permanent/semi-permanent use and a non-marking magnetic version which can be attached to vehicles, shelving and other metal surfaces.

Once the bracket is in the desired position, the Skipper unit snap-fits onto the bracket and locks into place. The quick release clip prevents the Skipper unit from detaching from the bracket and is also used to quickly disconnect the unit after use. The support brackets are perfect for logistics, warehousing, and facilities management.



Skipper wall/magnetic support			
Height	Width	Depth	Weight
168mm	124mm	133mm	170/275g
6.6"	4.9"	5.2"	6/9.7oz



Skipper wall and magnetic receiver clips act as an endpoint for Skipper retractable barriers and can also be used to support the Skipper waste & safety management accessories. As with the support brackets, the receiver clips are available in both magnetic and non-magnetic variants.

Both versions of the clips are fitted with non-marking rubber pads, preventing scratches and damage to surfaces. Simply pull out the tape from any Skipper or Skipper XS unit and slide it into the receiver clip. This will end the barrier without using additional Skipper units, cones, or posts. Waste and safety management products, such as recycle bins, safety dispensers and sanitiser brackets can be attached directly to the receiver clip. It's the perfect connection.



Skipper wall/magnetic receiver clips			
Height	Width	Depth	Weight
100mm	80mm	23mm	45/60g
3.9"	3.1"	0.9"	1.6/2.1oz



## Success is all about the right connections

**This safety light** is a multifunctional, LED system that attaches to Skipper and Skipper XS units. It's ideal for traffic control, airports, petrochemicals and many other industries. The unit has a light sensor for automatic activation/deactivation, or can be set to full manual control. The bright LEDs can be switched between a flashing or permanent setting and the unit has an integrated rechargeable battery compartment which is powered by a standard adapter. Simply twist off the Skipper or Skipper XS unit's top cap and twist on the rechargeable safety light. Conforms to BS3143 part 2 1990.



Skipper rechargeable safety light			
Height	Width	Depth	Weight
122mm	140mm	140mm	360g
4.8"	5.5"	5.5"	12.7oz



## Connect and direct

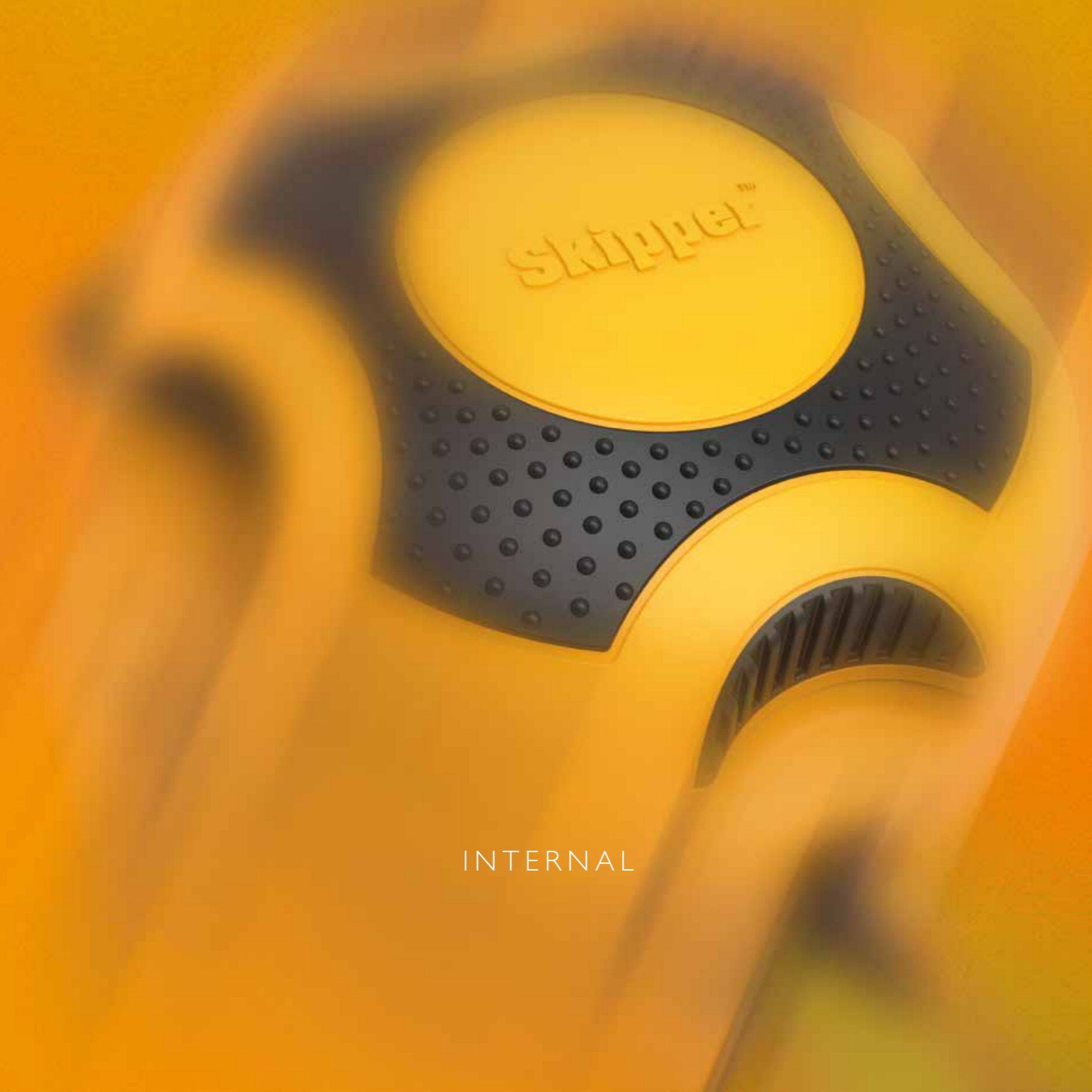
**This A4 sign holder** is designed for use with both Skipper and Skipper XS units. Its functional design makes it a great complement to the Skipper product range, allowing you to easily display warnings, promotional messages and directions. Simply insert your A4 message into the polycarbonate sleeve, and slide into the robust u-shaped frame. Twist off the Skipper or Skipper XS unit's top cap and twist the sign holder into position.



Skipper A4 sign holder			
Height	Width	Depth	Weight
348mm	266mm	28mm	480g
13.7"	10.5"	1.1"	16.9oz

*Designed to bayonet fit onto the top of each Skipper, adding to its connectivity and safety.*

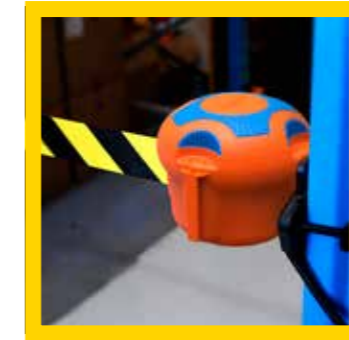




INTERNAL



The Skipper XS was designed to follow the great success of the external unit with a multi-surface, multi-functional range, designed to connect in any internal workplace. Internal areas can be wildly variable, so its innovative design, features a wealth of connecting opportunities, taking safety and risk management to another level.



There isn't a surface it can't connect to, totally innovative, totally perfect.

## Keeping internal environments safe

The Skipper XS range of products were developed to adapt Skipper's great versatility to indoor environments such as in warehousing, manufacturing and facilities management. The unique XS range allows for connection to any indoor surface, from high gloss and glass, to worktops, shelving, door frames and pillars, making anything possible.

The Skipper XS unit has the full 9 metres (30ft) of high-specification fabric webbing that's made Skipper the market leader in retractable barriers. Its three connector points allow it to interface from various angles with its accessories, each of which can hold the XS unit in place and receive its tape end clip, making the range hugely versatile and adaptable to indoor environments.



TAPE OPTIONS: red & white, black & yellow, green & white, blue & white, black & yellow 'CAUTION', red & white 'DANGER'



Skipper XS unit			
Height 126mm 5.0"	Width 145mm 5.7"	Depth 145mm 5.7"	Weight 700g 24.7oz



### Making connections in the right places

Skipper curved and magnetic cord strap clips utilise a robust bungee cord to tourniquet to structures such as pillars, trees and scaffolding. The clip is available in two variants; a non-marking magnetic version which is designed to attach to angular surfaces, and a curved version to fit securely to poles and cylindrical surfaces.

The cord strap clips are highly practical for indoor and warehouse environments, where they easily connect to shelving and pillars to both hold the Skipper XS unit and receive its tape end clip.



Skipper cord strap clip (magnetic)			
Height	Width	Depth	Weight
105mm	131mm	19mm	100g
4.1"	5.2"	0.7"	3.5oz

Skipper cord strap clip (curved)			
Height	Width	Depth	Weight
105mm	131mm	40mm	85g
4.1"	5.2"	1.6"	3oz



The clamp holder/receiver is used to attach the Skipper XS unit and/or tape end to angular surfaces such as door frames, work surfaces and racking. Simply position the clamp in place and turn the screw to tighten.

The clamp holder/receiver can be positioned either horizontally or vertically depending on the desired application.



Skipper clamp holder/receiver			
Height	Width	Depth	Weight
223mm	140mm	103mm	205g
8.8"	5.5"	4.1"	7.2oz



COLOUR OPTIONS:  
Orange & black, all black



The suction pad holder/receiver is designed for use with the Skipper XS unit and can both hold the unit in place and receive its tape end clip. It can also be used as a receiver clip for the standard Skipper unit, and as a support for the Skipper recycle bins and safety dispensers.

Simply position the suction pad onto a glass or high gloss surface and pull down the arm for an extremely strong connection.



Skipper suction pad holder/receiver			
Height	Width	Depth	Weight
45mm	78mm	117mm	65g
1.8"	3.1"	4.6"	2.3oz



## WASTE & SAFETY



Discover a wealth of fixing and display options with our beautiful range of waste and safety management products. Created with great ingenuity for both internal or external use, our clever modular attachments facilitate multiple arrangement possibilities, making it the most flexible range on the market today.



## Link to a smarter future

The Skipper modular waste and safety management solution provides a flexible and effective solution thanks to a wealth of fixing and display options. Being compatible with the existing range of Skipper and Skipper XS products makes the waste & safety management range intuitive for people already familiar with Skipper as well as newcomers.

The waste management range, like all Skipper products, is designed to be fully modular: The recycle bins, dispensers and sanitiser brackets can be used in a variety of different applications, from a free-standing station to direct attachment to walls, glass and posts. They're ideally suited to a wide range of industries, from construction to facilities management, retail, warehousing and many more.





*For external and internal use, these modular systems can be lifted and used all around a facility.*

## Make an enduring connection

**The Skipper recycle bin.** A robust and durable attachment for multi-purpose waste and recycling use. Up to two recycle bins can attach to the Skipper post & base system via its collar to create a fully free-standing safety & recycling station. The bins can also be attached to walls, magnetic surfaces, glass and high gloss surfaces, trees, posts and many more via the Skipper wall & magnetic receiver clips, suction pad holder/receivers and cord strap clips.

Each recycle bin is supplied with a selection of stickers to designate recycling type and as with the Skipper unit and Skipper post & base system, the recycle bin lid is available in a choice of colours to suit your organisation or recycling contents.



Skipper recycle bin			
Height	Width	Depth	Weight
194mm	339mm	376mm	1.1kg
7.6"	13.3"	14.8"	39.2oz



## Connected to safety

**The Skipper safety dispenser.** Providing easy access to safety equipment, such as ear plugs, protective eyewear and hair nets, the Skipper safety dispenser also acts as a safe container for battery disposal. Like the recycle bin, up to two dispensers can attach to the Skipper post & base system via its collar. As part of the modular waste and safety management system, the dispenser can also be screwed to walls, attached to magnetic surfaces, suctioned to glass and high gloss surfaces, tied to pillars and much more. The safety dispenser's lid is also available in the standard range of Skipper colours.



Skipper safety dispenser			
Height	Width	Depth	Weight
255mm	230mm	263mm	740g
10"	9.1"	10.4"	26.1oz



*With collars and supports that allow the versatile fixing options to posts and for gloss surfaces.*



## Be better connected

The **post & base collar** attaches firmly to the post by simply sliding over the top and seating into position. It provides a strong platform for attaching the Skipper recycle bins, safety dispensers and sanitiser brackets, turning the Skipper post & base system into a fully equipped, free-standing safety & recycling station.

After the post & base collar is attached, the Skipper unit can snap-fit to the post as usual, providing a unique combination of a 9m (30ft) barrier and recycling point.

A sign holder can also be attached to either the Skipper unit or the post & base cap to display your messages.



Skipper post & base collar			
Height	Width	Depth	Weight
185mm	191mm	131mm	415g
7.3"	7.5"	5.2"	14.6oz



## Connect to support

The **Skipper recycle bins and safety dispensers** fix to high gloss and glass surfaces is easily achieved via the Skipper suction pad bracket and suction pad. The bracket provides the required additional strength to support either a full recycle bin or safety dispenser, without damaging either the suction pad or the chosen surface.

Simply attach the Skipper suction pad to the desired surface, then slide on the suction pad support bracket. The Skipper recycle bins or safety dispensers then slide into the support bracket. The bracket is not required for lighter items such as the hand sanitiser bracket.



Skipper suction pad support bracket			
Height	Width	Depth	Weight
185mm	191mm	131mm	415g
7.3"	7.5"	5.2"	14.6oz



## Connectivity at your fingertips

The hand sanitiser bracket holds standard pump dispensers up to a diameter of 75mm. The bracket is designed for areas where sun screens, sanitisers and other gels and creams are required, such as construction sites, hygienic environments and kitchens.

Via the modular Skipper connector slot, the sanitiser bracket can attach easily and securely to other Skipper products including the cord strap clip, suction pad, post & base collar and wall clip - as well as the Skipper unit itself.



Skipper sanitiser bracket

Height	Width	Depth	Weight
109mm 4.3"	80mm 3.1"	90mm 3.5"	60g 2.1oz



The Skipper curved and magnetic support brackets are part of the Skipper XS range, but are also highly practical when used in conjunction with the Skipper waste & safety management range.

As the bungee cord offers a very strong connection with its tourniquet, the recycle bins and safety dispensers can be attached directly to the clip. This creates a hugely versatile platform for connecting to structures such as scaffolding, trees, shelving and pillars.



*For safer environments inside and out, a range of connections for increased health and safety.*

Skipper cord strap clip (magnetic)

Height	Width	Depth	Weight
105mm 4.1"	131mm 5.2"	19mm 0.7"	100g 3.5oz

Skipper cord strap clip (curved)

Height	Width	Depth	Weight
105mm 4.1"	131mm 5.2"	40mm 1.6"	85g 3oz



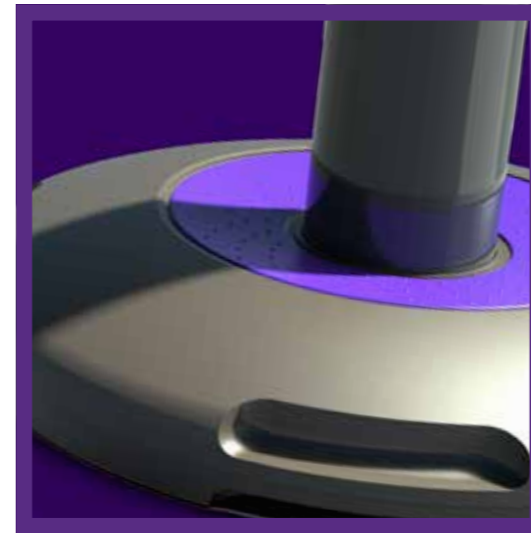


PUBLIC GUIDANCE



Product design should continually push boundaries, to innovate and improve. From the problem-solving design brief, to the detailed analysis of the industry, so Skipper Q was born.

Everything from the weighted base packs, to the polypropylene is recyclable under a back to Skipper campaign. Design detail un-matched and un-available from its competitors, a Q system has never looked so good.



We listened to our customers who wanted more sustainability from products with vastly improved features.



### A Q system has never looked so good

The new Skipper Q range has been re-engineered from the ground up. Beautifully designed and utilising the finest materials, it simply leads the way in public guidance systems.

No steel to rust. No powder coating. Just a barrier system with timeless good looks that looks as good as it performs.

The mix of surface textures, from high gloss, satin and matt, all combine to the sleek sophisticated look of the Skipper Q. Bezel detail on the head and foil textures on the post collar are only available when these systems are not fabricated from old style non-recycled steel posts.

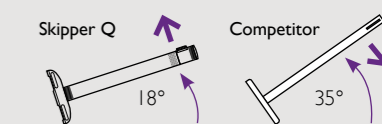


### Connecting design and performance

Skipper Q is a modular barrier system designed to fit seamlessly into any retail or business environment and able to withstand the highest traffic areas, both indoors and outdoors.



Improved tipping point. The Skipper Q tipping point has been vastly improved and is now the market leader in this area. With a tipping angle of just 18° with our nearest competitor 35° meaning the Q is safer and more resilient to toppling.





A range of multiple colour options and they're all Green. Beautifully designed and with features only available in Skipper Q.



## Connect to a greener future

Meet your sustainability goals with Skipper Q. This stunning range is not just beautiful to look at, it's environmentally friendly too. Made from recyclable materials and fully recyclable, our design team considered the future before designing Skipper Q, examining in detail the things that mattered to our customers most. Sustainability, low carbon impact and green credentials were high on the list of priorities and inspired us to do better; to better serve our customers and the planet.

And so the Skipper Q was created using a blend of science, engineering and discovery, all of which have been channelled into the Skipper range. Fully recycled. Fully recyclable.

With current existing stanchions having weight in the base made from either metal or concrete, our four weighted packs in the base can be recycled under a back to Skipper campaign, where they can be redeemed against replacements, giving a discount, saving money and saving the planet.

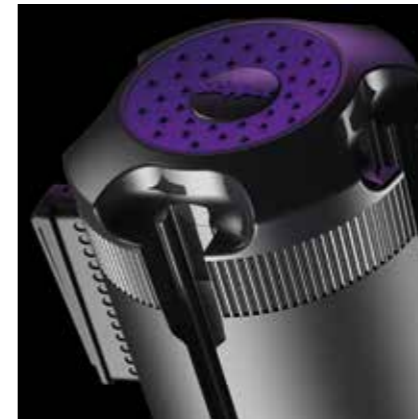


Bespoke colour options, mix of surfaces, fine detail, and quality materials all combine to create the sleek, sophisticated look and feel of Skipper Q you simply won't find anywhere else.



Skipper Q post		
Height	Diameter	Weight
880mm	80mm	0.9kg
34.64"	3.14"	0.03oz

Skipper Q base		
Height	Diameter	Weight
55mm	350mm	6.9kg
2.16"	13.77"	243.3oz



The Q system has many modular options available, making it the most versatile, safest and eco-friendly system on the market.

## Endless ways to connect

Uniquely customisable, Skipper Q offers a comprehensive colour solution to suit your brand requirements. With five colours and 13 tape options, the Q system can elevate your business in prestige outdoor and indoor locations, including facilities management, retail and showroom spaces, finance institutions, leisure and hospitality venues across the world.

Environmentally friendly. Non-scratch surfaces. Multiple colour options and finishes. Quicker set up with no tools. Slower, safer tape retraction. Fully integrated system with sign holders and wall clip options. These are just some of the design features you can expect from Skipper Q.

With its stunning design, modularity and customisation, Skipper Q enables your business to stand out from the crowd with a range of possibilities never seen before in retail, leisure, hospitality, business, or travel environments.

Easily attach recycle bins, dispensers and sanitiser brackets, along with signs to create the most comprehensive system on the market today.



Standard Colours - 3m Tape



Options

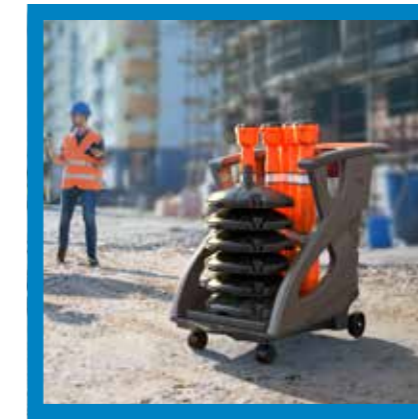
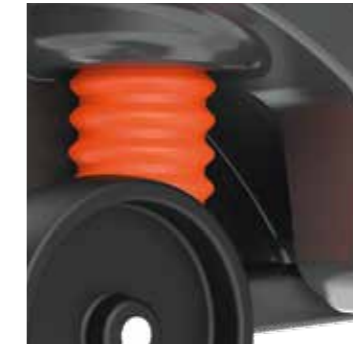


CAUTION DO NOT ENTER

CLEANING & HYGIENE



Designed with modularity and beauty, the Unicart takes the humble cleaning trolley far into the future. Our vision to allow the transformation from a janitorial cart, into a transportation system for all Skipper products, resulted in this ground-breaking shift from the current tired and standard offering, to the pioneering shape of things to come, in an industry with a strong hunger for cutting edge innovation.



*For the simple transportation of the Skipper range, designed for use in all environments both inside and out.*

## The art of connecting

The Skipper Unicart is distinctive, beautiful and contains a wealth of innovation.

Seen here housing the original orange Skipper barrier system, the Skipper Unicart is easy to manoeuvre thanks to its large ergonomically designed handle, brakes, and suspension on the rear wheels.

The suspension creates a huge benefit adding to the control of the trolley, also improving and dampening the sound, when they are manoeuvred across multiple surfaces.

Whether it's a hotel, office or construction site, the multi-functional Skipper Unicart connects to your environment, perfectly.



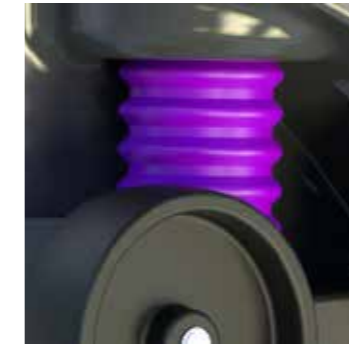
## Connects inside and outside

Beautifully designed yet robust, rugged, and hard-working, the Skipper Unicart makes every task easier wherever you use it.

With the base tray insert, you can stack up to six posts and bases and will take the weight of 100kg+ when the bases are filled with water.



Skipper Unicart			
Height	Width	Depth	Weight
1144.6mm	705mm	1568.3mm	26kg
45.06"	27.75"	61.74"	91.7oz



*The distinctive and practical construction hides a wealth of innovation allowing this cart to be completely flexible.*

### The right connection for any setting

Seen here transporting the new Skipper Q barrier system, this beautifully designed multi-cart is perfect in hospitality settings – and there's more to this than meets the eye.

With the supplied Skipper Q base insert you can carry up to eight posts and bases. The Skipper Unicart has been designed with unparalleled modularity, versatility, and value. Once you have used the cart to deploy your Skipper products, you can quickly transform it into a smart and easy to manoeuvre janitorial trolley.



### Connect with Q

The Unicart can carry up to eight Skipper Q post and bases. Simply insert the tray and clip in the two base sides to quickly deploy your public guidance system.





Simply remove the transport base tray, connect all the optional drawers, trays and bins, transforming it for cleaning and hygiene duties.

## Transport it. Transform it

Thanks to Skipper Unicart, no longer do post and base carts need to sit gathering dust for months, wasting money.

The Skipper Unicart is one step ahead, quickly transforming into a handy janitorial trolley. Simply utilise the optional extras, such as tray and drawers to aid cleaning and hygiene tasks. You can also add waste bins and other Skipper products via the rear connection/clip, enhancing the full versatility of the ground breaking trolley design.



## Right connectors for greater modularity

The Skipper Unicart is multi-purpose, multi-functional and truly modular without compromising design, function, or operation.

The supplied circle clips are perfect for the safe handling and security of mops, brushes and dusters.

Looking just as good in a modern office environment as it does on an industrial site, the Skipper Unicart has been designed with the future in mind.








Skipper™ 12 Wolfe Close,  
Parkgate Industrial Estate, Knutsford,  
Cheshire, United Kingdom. WA16 8XJ

Web: [www.skippertm.co.uk](http://www.skippertm.co.uk)

Tel: +44 (0) 844 412 7757

Fax: +44 (0) 844 412 7758

Email: [sales@skippertm.co.uk](mailto:sales@skippertm.co.uk)

  
**Skipper™**  
Beyond modular connectivity