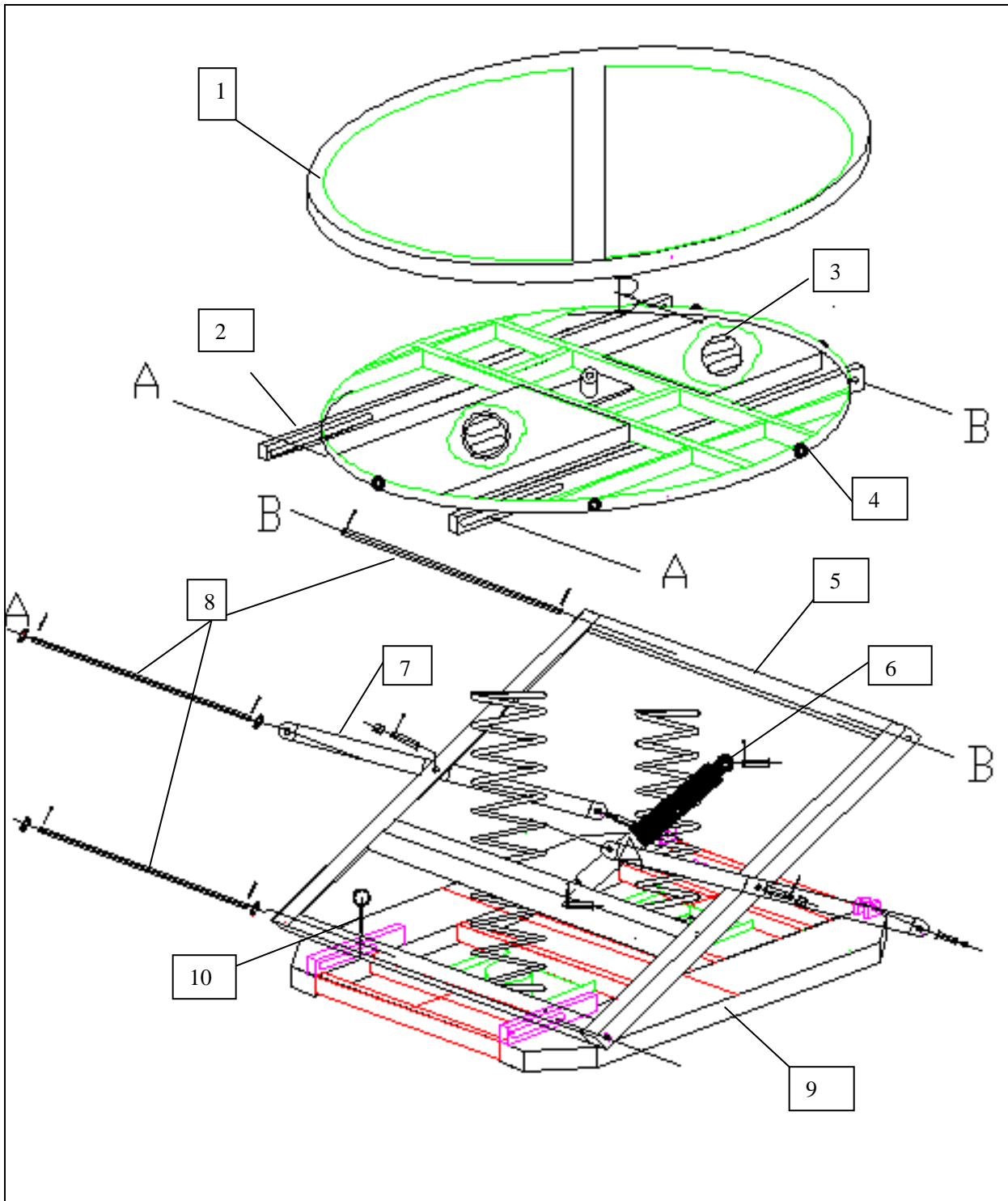
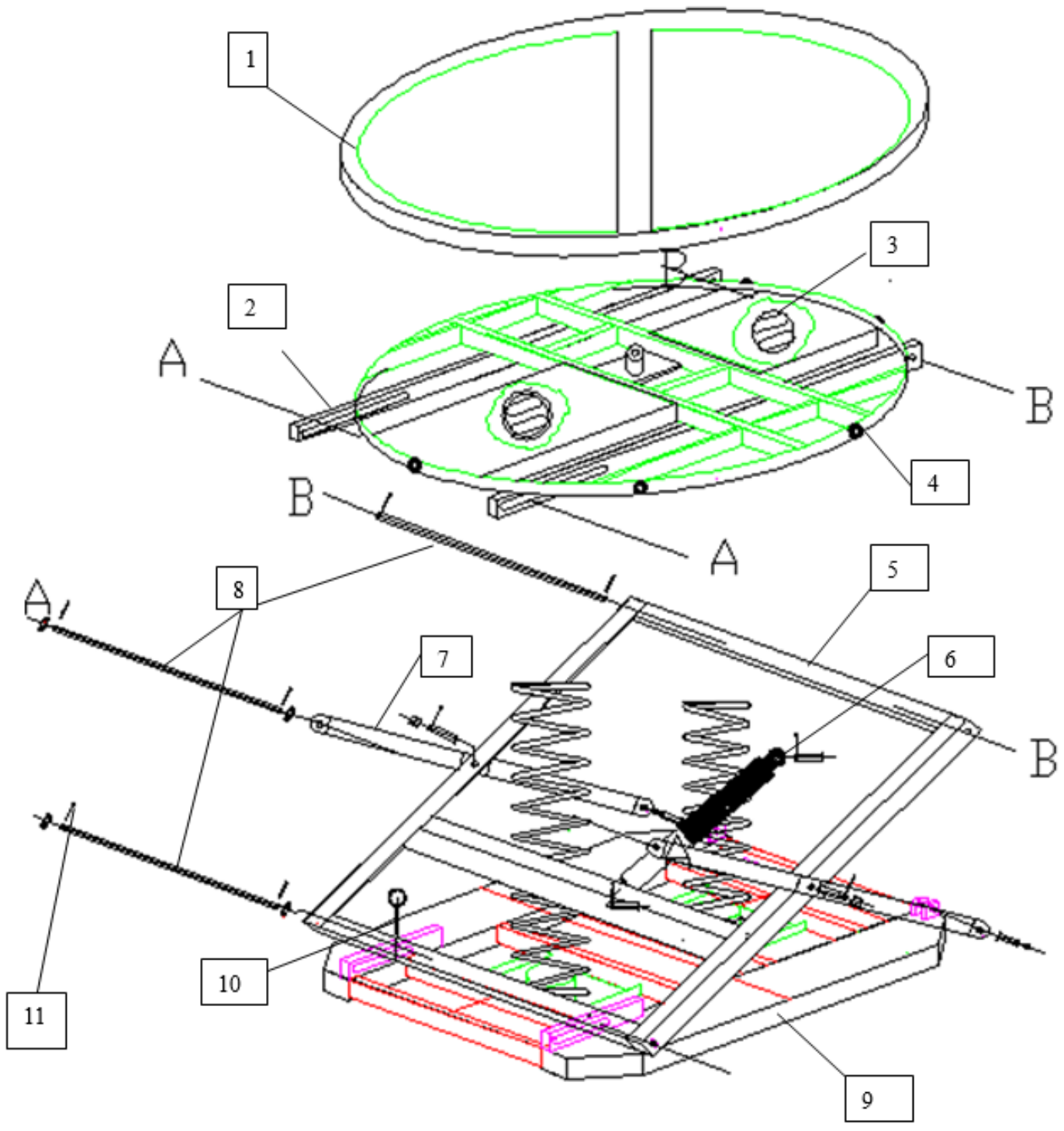


# *Instruction Manual*

## *Parts List*







## Introduction

The Pallet & Spring Level Loader is a simple device which will automatically maintain a load at the ideal height for manual loading and unloading. If a palletized load is placed on the product, it gradually rises as boxes or parts are removed. This automatically maintains the top of the load at the correct working height. The Pallet & Spring Level Loader may also be used in another way. An empty pallet may be placed on it. It gradually lowers as boxes or parts are added. Again, this keeps the top of the load at the correct height. Complete pallets may be loaded or unloaded using a fork lift.

Each Pallet & Spring Level Loader includes a steel or stainless steel scissor lift and at least one large compression spring. The springs are chosen to match the weight and height of a fully loaded pallet. Springs are available for a wide range of weight and height combinations. The Pallet & Spring Level Loader also includes a shock absorber (optional on the stainless steel model). This eliminates any tendency for the load to bounce on the springs.

This manual contains information to help you to learn about the safe and proper installation, use, and upkeep of your Pallet & Spring Level Loader. Please be sure that this manual is available to anyone who uses or services the Pallet & Spring Level Loader.

Pallet & Spring Level Loader may be used in a wide variety of industrial settings. The instructions in this manual are not necessarily all-inclusive, as we cannot anticipate all conceivable or unique situations. **In the interest of safety, please read this whole manual carefully. Be familiar with the contents of this manual before you install or use the Pallet & Spring Level Loader. If you are not sure of the proper procedure to be followed, please call us for more information.**

**This instruction manual is not intended to be or to create any other warranty, express or implied, including any implied warranty of merchantability or fitness for a particular purpose, all of which are hereby expressly excluded.** As set forth more specifically in the product warranty, Our obligation under that warranty is limited to the repair or replacement of defective components, which shall be the buyer's sole remedy, and we shall not be liable for any loss, injury, or damage to persons or property, nor for any direct, indirect, or consequential damage of any kind resulting from the Pallet & Spring Level Loader.

The Pallet & Spring Level Loader is a simple device which safe as possible for operators and service workers. If you take a few common-sense precautions, you will be able to use the unit safely. However, it is a powerful unit with moving parts, and is capable of causing personal injury if proper precautions are not taken therefore through out this manual, we have identified certain hazards which may occur in the use and servicing of the Pallet & Spring Level Loader, and provided appropriate instructions or precautions which should be taken to avoid these hazards. In some cases, we have also pointed out the consequences which may occur if the instructions or precautions are not followed. We use the following system of identifying the severity of the hazards associated with its product:

**DANGER!** Immediate hazard which will result in severe personal injury or death.

**WARNING!** Hazard or unsafe practice which could result in severe personal injury or death.

**CAUTION!** Hazard or unsafe practice which could result in minor personal injury or property damage.

**Please read and follow this instruction manual, including all safety instructions and precautions, carefully and completely.**

### **Installation Notes**

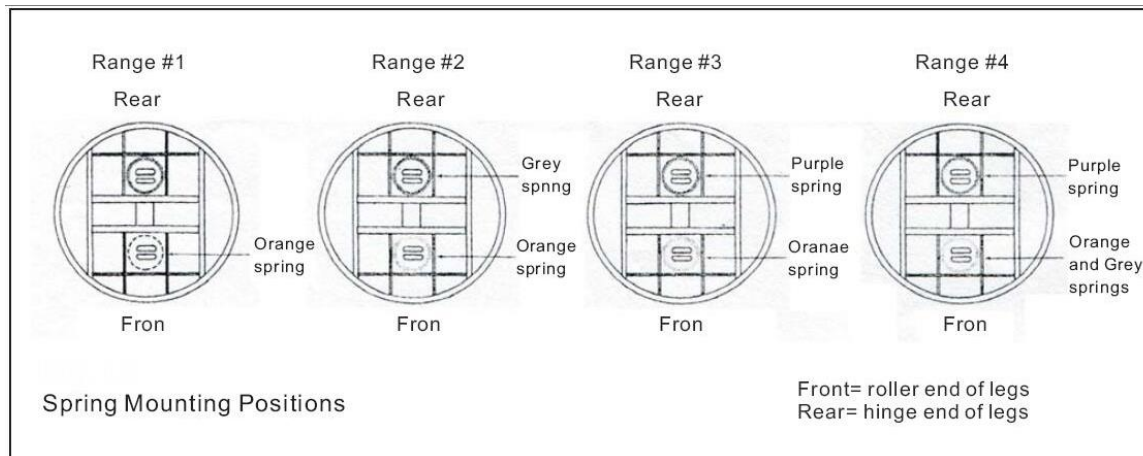
#### **WARNING!**

The unit must be installed on a firm, nearly level surface. The frame of the unit must sit firmly on the floor, and the floor must be level. If the frame is not supported correctly, stresses may develop in the frame. The unit may bind or not work easily. The rotating ring may not rotate correctly.

<b>No.</b>	<b>Item</b>	<b>Specification</b>	<b>Quantity</b>
1	Rotating Platform	Φ1110	1
2	Support Frame	1150*654	1
3	Spring Cover	Φ240	2
4	Roller	6303	8
5	Inner Scissor	1160*574	1
6	Shock Absorber	Φ65*Φ53	1
7	External Scissor	1160*50	2
8	Axle	Φ16	3
9	Base	1150*934	1
10	Spacer Pin	Φ8	1
11	Hand pull pin	Φ6x35,with steel ball	8

Cargo height including pallet(mm)	0-400#	400-800#	800-1200#	1200-1600#	1600-2000#	2000-2400#	2400-2800#	2800-3200#	3200-3600#	3600-4000#	4000-4500#
58-60"	—	—	1	1	1	1	2	2	2	3	3
56-58"	—	—	1	1	1	2	2	2	2	3	3
54-56"	—	—	1	1	1	2	2	2	2	3	3
52-54"	—	1	1	1	1	2	2	2	3	3	3
50-52"	—	1	1	1	1	2	2	2	3	3	4
48-50"	—	1	1	1	1	2	2	2	3	3	4
46-48"	—	1	1	1	1	2	2	3	3	3	4
44-46"	—	1	1	1	2	2	3	3	3	4	4
42-44"	—	1	1	2	2	2	3	3	4	4	4
40-42"	—	1	1	2	2	3	3	3	4	4	4
38-40"	—	1	1	2	2	3	3	4	4	4	4
36-38"	—	1	1	2	2	3	4	4	4	4	4
34-36"	1	1	2	2	3	3	4	4	4	4	—
32-34"	1	1	2	3	3	4	4	4	4	—	—
30-32"	1	1	2	3	3	4	4	4	4	—	—

Caution: Pallet & Spring Level Loader springs are precisely calibrated and will work best within the load weight and height ranges selected. Selection based on higher or lower than actual weight will result in restricted raising or lowering capability. Should pallet weight or height weight requirements dramatically change, Pallet & Spring Level Loader can be adapted in the field at any time by simply changing the sprig combination.



**WARNING!**

Do not try to use this unit with damaged or broken pallets. Broken pallets may have boards or nails which hang down below the main part of the pallet. As the pallet is turned, these boards or nails may catch on the frame of the unit. This can cause the pallet to stop turning suddenly, causing the load to shift.

Operation Notes - Use with Fork Lift or Stacker

You must take some special precautions when using a fork lift or stacker with the Pallet & Spring Level Loader:

When loading using a fork lift or stacker –

**WARNING!**

When adding a load to the Pallet & Spring Level Loader, lower the forks completely before removing the fork lift. The pallet must be completely supported by the Pallet & Spring Level Loader. If you do not do this, the load may be dropped when you remove the fork lift. The Pallet & Spring Level Loader or the load may be damaged, or you may be hurt.

When unloading using a fork lift or stacker –

**WARNING!**

When removing a load from the Pallet & Spring Level Loader, lift the load clear of the Pallet & Spring Level Loader before backing out the fork lift. If you do not do this, the top of the Pallet & Spring Level Loader may jump up when you remove the fork lift. The Pallet & Spring Level Loader or the load may be damaged, or you may be hurt.

When moving the Pallet & Spring Level Loader -

Do not move the Pallet & Spring Level Loader while it is loaded. This will damage the base frame of it. The pockets on the base frame are designed to support an unloaded Pallet & Spring Level Loader, they cannot support any extra weight.

**Specifications**

Model	<b>PP2000G</b>
Capacity(kg)	2000
Platform Diameter(mm)	1110
Compressed Height(mm)	270
Extended Height(mm)	710
Net Weight(kg)	168

## **Installation Instructions**

### **Unpacking the Pallet & Spring Level Loader**

1. Before you start to install the Pallet & Spring Level Loader, check for local codes and ordinances which may apply. It is your responsibility to obtain any necessary permits.
2. Please read all of these instructions carefully. Be sure to read and understand all of the warnings.
3. Choose the place where you want to use the Pallet & Spring Level Loader. It is very important that the Pallet & Spring Level Loader be set up on a smooth and flat surface. Check the floor surface carefully and make sure that it is free of all loose debris and dirt. Using optional adjustable feet, the unit can compensate for a slightly sloping floor (1:25), but the surface must be smooth and solid.

### **CAUTION!**

The Pallet & Spring Level Loader must be installed on a smooth flat surface. If the floor is not flat, this can create stresses in the frame of it. The Pallet & Spring Level Loader may not work properly, or parts of the unit may wear more quickly than they should. You may be hurt or the load may be damaged.

**Note:** Before using the unit, do a safety check. Be sure that each of the spring bayonet caps is in place and rotated to their locked position. Check the top and bottom of each spring to be sure it is seated correctly. Check the lynchpin at the top of the shock absorber. These checks are very important.