

INSTRUCTION MANUAL

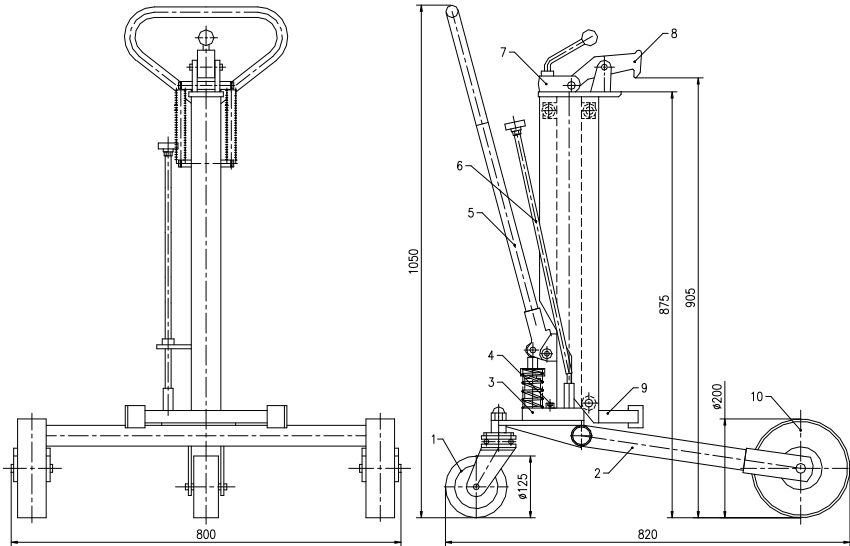
THANK YOU FOR USING THIS HYDRAULIC DRUM TRUCK. FOR YOUR SAFETY AND CORRECT OPERATION, PLEASE CAREFULLY READ THIS INSTRUCTION BEFORE USING IT.

NOTE: All of the information reported herein is based on data available at the moment of printing. The factory reserves the right to modify its own products at any moment without notice and incurring in any sanction. So it is suggested to always verify possible updates.

This hydraulic drum truck is used to clamp the drum on the ground or stock for load and unload, transit, stack the drum. It is used widely to factory, depot and etc.

1. FIGURE AND PARAMETER

1.1 Figure



1.2 Technical Parameter

Model	DL388Y
Capacity (kg)	250
Suitable for Drum Diameter (mm)	572
Pump Stroke (mm)	345
Overall Size (L×W×H) (mm)	820×800×1050
Net Weight (kg)	45

2. PART NAME

- (1) Swivel Wheel (Versatile Wheel)
- (2) Fork Assy.
- (3) Cylinder Assy.
- (4) Screw

- (5) Handle
- (6) Discharge Joystick
- (7) Lever
- (8) Clamp
- (9) Leg
- (10) Front Wheel
- (11) Bolt
- (12) Chassis

3. WARNING

- 3.1 Never use the drum truck when it has failure.
- 3.2 Never overload this truck beyond its rated capacity.
- 3.3 Place the drum on the low position when do not lift.
- 3.4 Raise slightly the drum on the ground when transit drum, do not need lift it higher.

4. INSTALLATION AND OPERATION

4.1 INSTALLATION

- (1) Open the box, take out the fork (2), cylinder (3), screw (4), handle (5), bolt (11) and chassis (12) for ensuring part is full.
- (2) Fix the fork (2) and chassis (12) with bolt (11).
- (3) Place the pump (3) on the chassis (12) and fix it with connected screw (4).
- (4) Insert the handle (5) in the pump seat on the cylinder assembly (3) and clamp it with the screw.

4.2 OPERATION

4.2.1 Lift drum

Screw joystick clockwise, and then move the transporter so as to make the lifting frame contact with drum. Repeatedly press the handle (Part No. 5) to pump up the lifting frame so that the upper edge of drum is between the clamp's teeth and the teeth on the upper end of lifting frame. Please refer to the following figure. Then push the bulbous knob connected to clamp (Part No. 8) to allow the clamp to grab the drum firmly and for the bulbous knob to lock the clamp (Part No. 8). Continue to pump up the lifting frame by handle (Part No. 5) and the drum will be lifted.

4.2.2. Transport drum

Push / pull the handle (Part No. 5) to move the transporter to the destination. (Of course, if necessary, operator can turn the handle to change the transporter's moving direction.) For the sake of safety it is recommended to move the loaded transporter while the drum's position is as low as possible.

4.2.3 Put down drum

Slowly screw joystick (Part No. 6) counterclockwise and lower the drum till it stands on the floor. Pull the bulbous knob back to unlock position so as to release the clamp.

Warning: It is forbidden to screw joystick (Part No. 6) anticlockwise rapidly in case of damage of the drum or the transporter.

5. MAINTENACE

- 1. Do routine check of chassis (Part No. 12) and front rear wheels. Especially make sure that rear caster is firm.
- 2. Do routine check of packing.
- 3. It is feasible and recommended to change hydraulic oil while changing packing. It is suggested to use equivalent performance hydraulic oil.

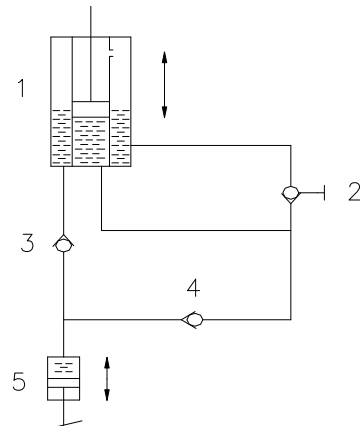
Use different hydraulic oil according to temperature scale below.

Temperature	Hydraulic Oil
-5℃ ~ +45℃	L-HM68 Hydraulic oil (equivalent to ISO VG68)
-15℃ ~ -5℃	L-HM46 Hydraulic oil (equivalent to ISO VG46)

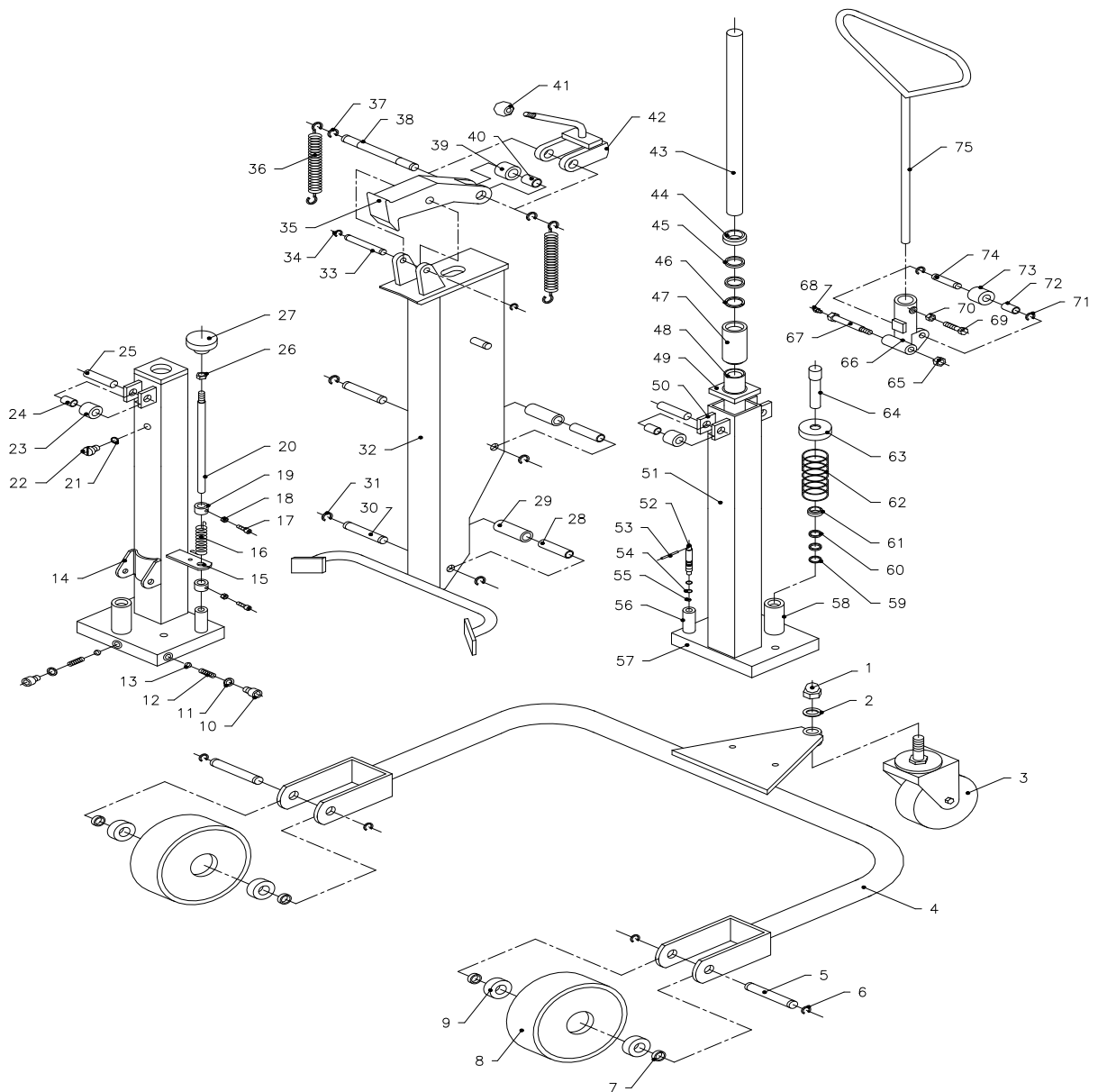
- 4. Do routine check of the clamp's tooth. Replace it if tooth wears out seriously.
- 5. Do routine check of all the connecting parts such as pins and fasteners.

6. HYDRAULIC CIRCUIT DIAGRAM

No.	Description
1	Hydraulic Cylinder
2	Swivel Discharge Valve
3	Relief valve
4	Work valve
5	Work Cylinder



7. EXPLODED VIEW & PART LIST



PART NO.	DESCRIPTION	QTY
1	Nut	1
2	Locking washer	1
3	Swivel wheel	1
4	Chassis	1
5	Pin	2
6	Retaining ring	4
7	Locking ring	4
8	Front wheel	2
9	Bearing	4
16	Torsional spring	1
17	Screw	2
18	Nut	2
19	Located ring	1
20	Discharge lever	1
23	Roller	2
24	Bearing	2
25	Pin	2
26	Nut	1
27	Handle	1
28	Bearing	2
29	Roller	2
30	Pin	2
31	Retaining ring	4
32	Supported rack	1
33	Pin	1
34	Retaing ring	2
35	Locking block	1
36	Spring	2
37	Retaing ring	2
38	Pin	1
39	Ring	1
40	Bearing	1
41	Ball	1
42	Lever	1
75	Operation handle	1
76	Cylinder assembly(#10-15, #21-22,#43-74)	1
77	Seal Kit	1