

WPT57H

ECO WEIGHING SCALE
HAND PALLET TRUCK

User Manual & Parts List



Thank you for using this hand pallet truck with scale. For your safety and correct operation of the scale, please read these instructions carefully before using it.

NOTE: (1) All of the information reported herein is based on data available at the moment of printing. The factory reserves the right to modify its own products at any moment without notice and incurring any sanction. So it is suggested to always verify possible updates.
(2) Prior to use this hand pallet truck with scale, the battery of scale must be charged enough.

1. GENERAL SPECIFICATIONS

Model	Capacity	Fork size		
		Length	Width over forks	Fork Width
WPT57H	2000 kg	1150mm	540mm	160mm
	2000 kg	1220mm	690mm	160mm

Materials and specifications are subject to change without notice.

2. TO ATTACH HANDLE TO PUMP UNIT

2.1 Remove the handle component (H100), insert it into the pump shell (B101).

2.2 Remove the axle from plastic bag(B09)

2.3 Insert the axle (B09) at one end of the pump shell(B101), then pump shell (B101) and handle components (H100) connection. Please note axle (B09) the position of the hole, Let the steel wire and nut on the chain (H09) through the axle (B09) hole (See the hydraulic system diagram and the handle component diagram).

2.4 Spring pin (B10) fixed the axle(B09).

2.5 Handle (H01) press the pump plunger(B18), and remove the pin(B11).

2.6 Raise the crank link (B46) and put the pin on rod and chain (H09) into the groove of crank link (B46).

3. TO ADJUST RELEASE DEVICE

On the handle of the pallet truck, you will find the control lever (H01) which can be set in three positions (See Fig. 1): LOWER=to lower the forks; NEUTRAL=to move the load; ASCENT=to raise the forks. After assembling the handle, you can adjust the three positions.

3.1 First tighten the setting screw (B46) on the crank link (B48) until the LOWER position function works.

3.2 If the forks elevate while pumping in the NEUTRAL position, turn the setting screw (B48) clockwise until pumping the handle does not raise the forks and the NEUTRAL position functions correctly.

3.3 If the forks descend while pumping in the NEUTRAL position, turn the setting screw (B48) counter-clockwise until the forks do not lower.

3.4 If the forks do not descend when the control lever (H01) is in the LOWER position, turn the setting screw (B48) clockwise until raising the control lever (H01) lowers the forks. Then check the NEUTRAL position as per item 4.2 and 4.3.

3.5 If the forks do not lift while pumping in the ASCENT position, turn the setting screw (B48) counter-clockwise until the forks elevate while pumping in the ASCENT position. Then check the NEUTRAL and LOWER position as per item 4.2, 4.3 and 4.4.

4. MAINTENANCE

4.1 OIL

Please check the oil level every six months. Total oil amount is about 260 ml, add injection oil 50-100 ml, this must be with the forks in the lowered position.

Add or change the hydraulic oil according to the table below.

Temperature	Oil
-20°C~+40°C	L-HV46 Hydraulic oil

4.2 HOW TO EXPEL AIR FROM THE PUMP UNIT

Air may enter the unit when the seals are replaced. Lift the control lever (H01) to the LOWER position, then move the handle up and down for several times.

4.3 DAILY CHECK AND MAINTENANCE

Daily check of the pallet truck can limit wear and tear of the unit. Pay special attention to the wheels (B33, AF06), the axles (AF08, AF09,), the handle (H01), the forks (AF01) and lift and lower control.

4.4 LUBRICATION

Use motor oil or grease to lubricate all moveable parts.

5. GUIDE TO SAFE OPERATION

For safe operation of the truck, please read all warning signs and instructions here and on the truck before using this truck.

- 5.1 Do not operate the pallet truck unless you are familiar with it and have been trained or authorised to do so.
- 5.2 Do not operate the truck unless you have checked its condition. Give special attention to the wheels, the handle assembly, the forks, lift and the lower control.
- 5.3 Do not use the truck on sloping ground.
- 5.4 Never place any part of your body in the lifting mechanism or under the forks or load. Do not carry passengers.
- 5.5 The operator should wear gloves and safety shoes for protection.
- 5.6 Do not handle unstable or loosely stacked loads.
- 5.7 Do not overload the truck.
- 5.8 Do not subject to unbalanced load, either side to side or along the length of the frame (refer to Fig. 2/B).
- 5.9 The capacity of the truck assumes an evenly distributed load with the centre of the load being at the halfway point of the length of the forks (refer to Fig. 2)
- 5.10 Make sure that length of the forks matches the length of the pallet.
- 5.11 Lower the forks to lowest height when the truck is not being used.
- 5.12 At other specific conditions or places, the operator should operate the pallet truck carefully.

6. TROUBLE SHOOTING

NO	TROUBLE	CAUSE	ACTION
1	The forks do not lift to maximum height.	-Not enough hydraulic oil.	-Add more oil.
2	The forks do not lift up.	-Not enough hydraulic oil. -The oil has impurities. -Discharge valve is out of adjustment. -Air in the hydraulic oil.	-Pour in more filtered oil. -Change the oil. -Adjust the setting screw (B48). -Expel the air.
3	The forks do not descend.	-The rod (B101) and the pump cover (B02) are deformed resulting from a seriously unbalanced load. -A part has been broken or been deformed resulting from unbalanced load. -The setting screw (B48) is not in the correct position.	-Replace the rod (B02) or pump cover (B101). -Repair or replace component. -Adjust the setting screw (B48).

4	Leaks	-Seals worn out or damaged. -Some parts may be cracked or worn out.	-Replace seals with new ones. -Check and replace with new ones.
5	The forks descend without being lowered.	-Impurities in the oil cause the discharge valve (B106) to fail to close. -Air in the oil. -Seals worn or damaged. -Discharge valve (B106) is out of adjustment.	-Replace with filtered oil. -Expel the air. -Replace with new ones. -Adjust the setting screw (B48).

7. EIGHING OPERATION

- 7.1 Put the control lever in the LOWER position and lower the truck to lowest position.
- 7.2 Press the ① key to turn the system on. After the start-up sequence the indicator will display the weight.
- 7.3 Weighing method for gross weight::
 Press the ZERO key to set the gross weight to 0. Put the forks under the pallet and check that the load is properly balanced. Put the control lever in the ASCENT position, pump the handle to make the forks rise until the pallet has left the ground. When the indicator is stable, the gross weight of the goods (total weight of the pallet and the goods) is shown.
- 7.4 Weighing method for net weight:
 To display the weight of the goods without the weight of the pallet (or other container):
- 7.4.1 Weigh single standard pallet, for example: weight of pallet: 40kg.
- 7.4.2 Press the ZERO key, the indicator will display "0kg".
- 7.4.3 Remove the pallet from the forks, the indicator will display "-40kg".
- 7.4.4 Weigh the goods on the pallet as shown in 7.3, when the indicator is stable, the net weight of the goods is shown.
- 7.5 Switch between kg and lb.
 When the weight is shown in kg's, Press on the ZERO key will soon be kg to switch to the pound. Press on the ZERO key again and the unit shown will switch back to kg.
- 7.6 Turn off the Indicator
 Press on the ON / OFF key until the indicator displays "OFF". Releasing the key will turn off the indicator.

8. BATTERY POWER DATA AND REPLACEMENT

- 8.1 How to change batteries:
- 8.1.1 Loosen the screws on the battery cover and remove the cover.
- 8.1.2 open the screw on battery and pull out battery ,out the socket.
- 8.1.3 put the new battery and insert the socket.
- 8.1.4 Screw the battery cover plate back into position.

Fig.1

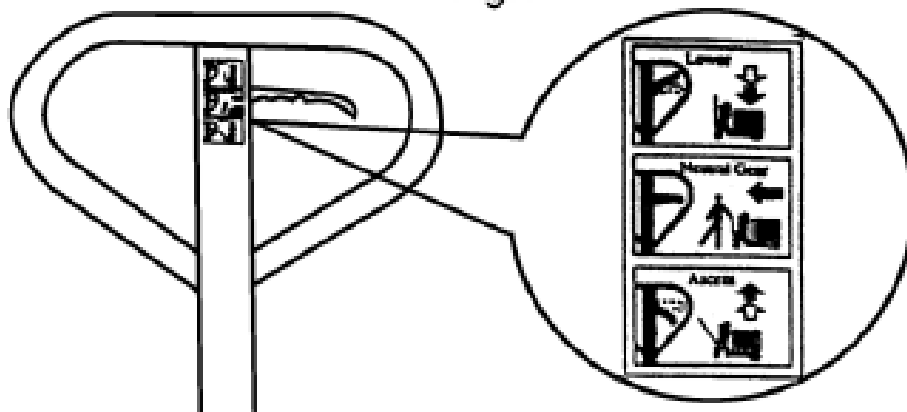
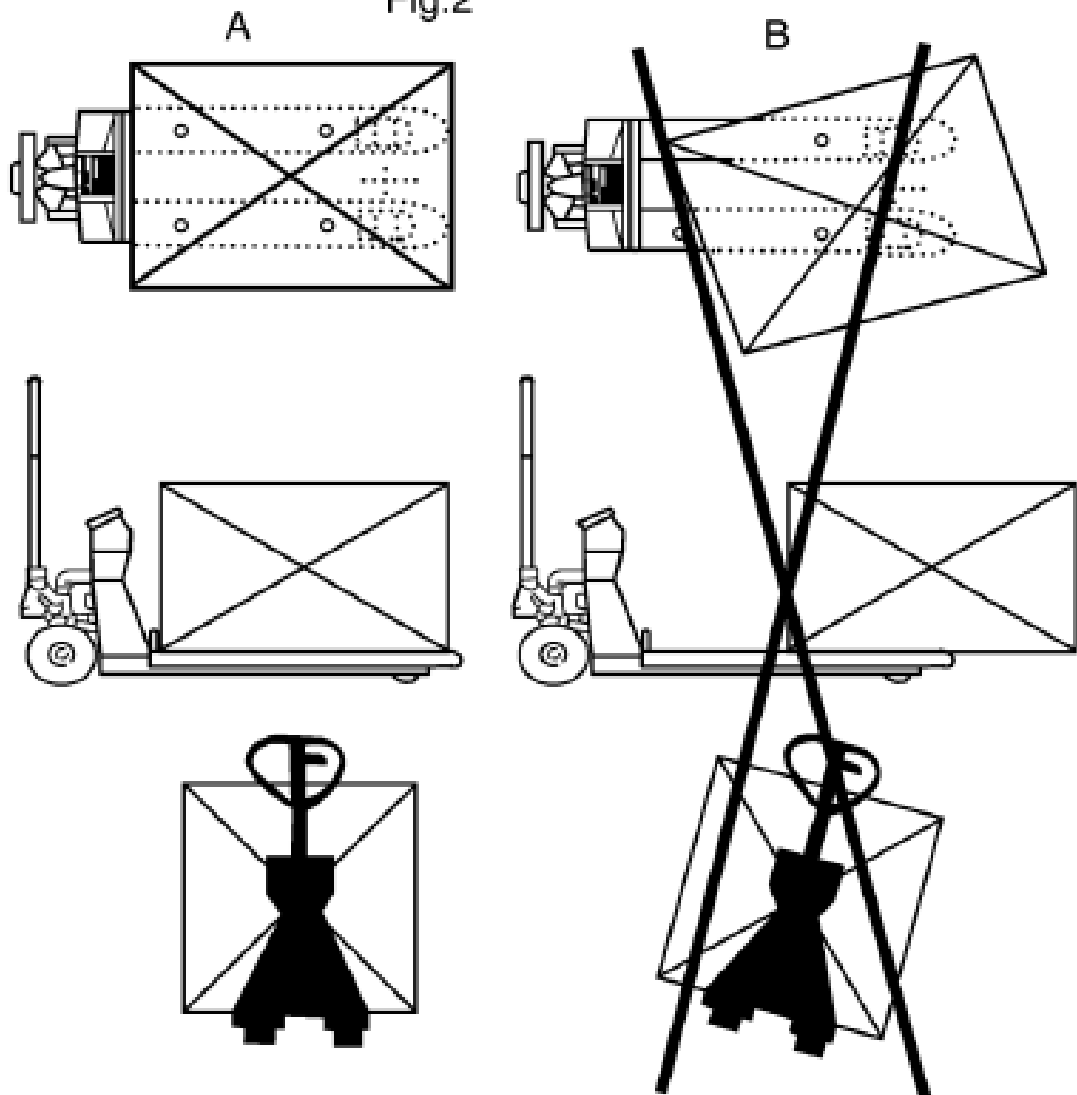
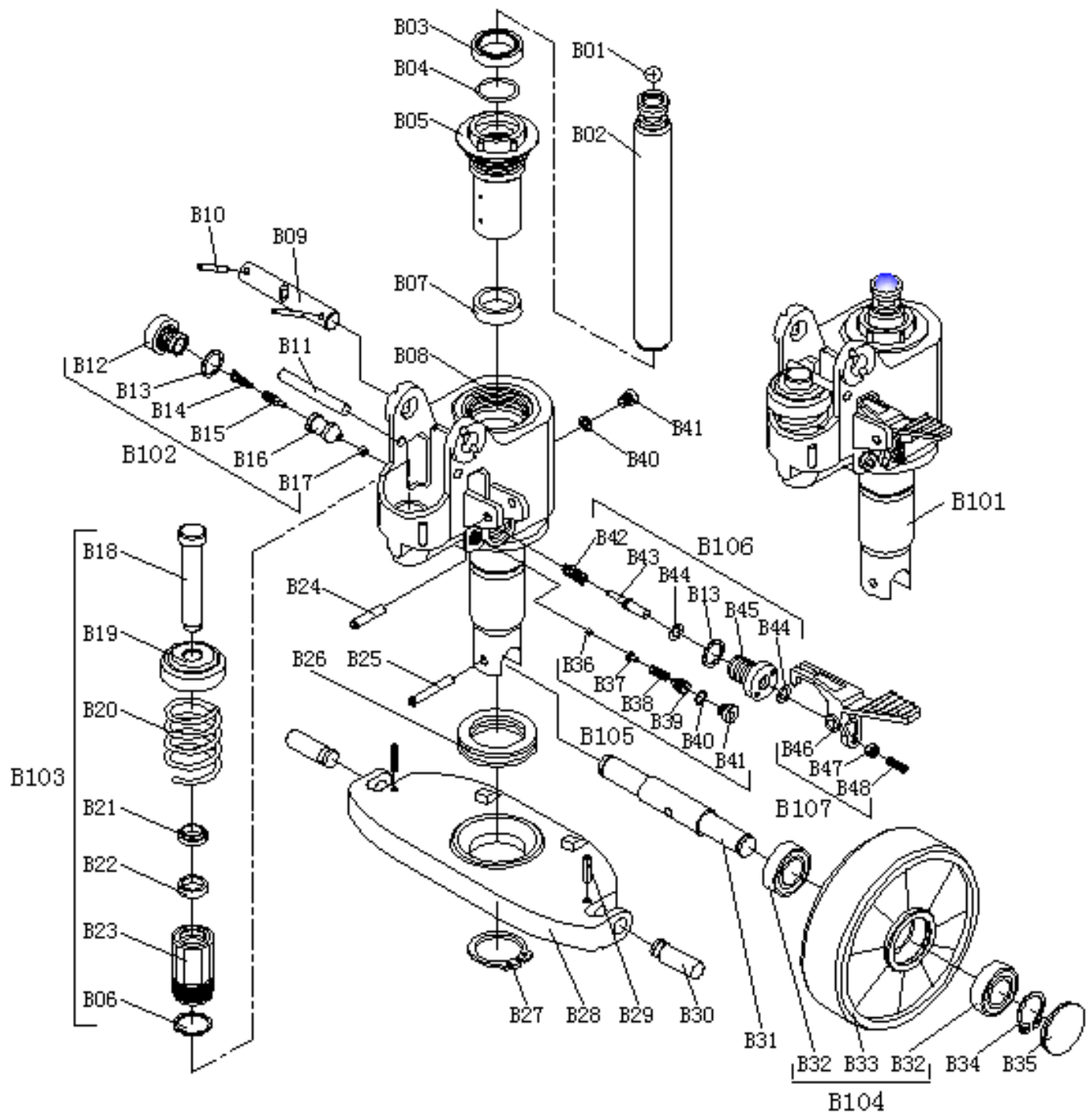


Fig.2



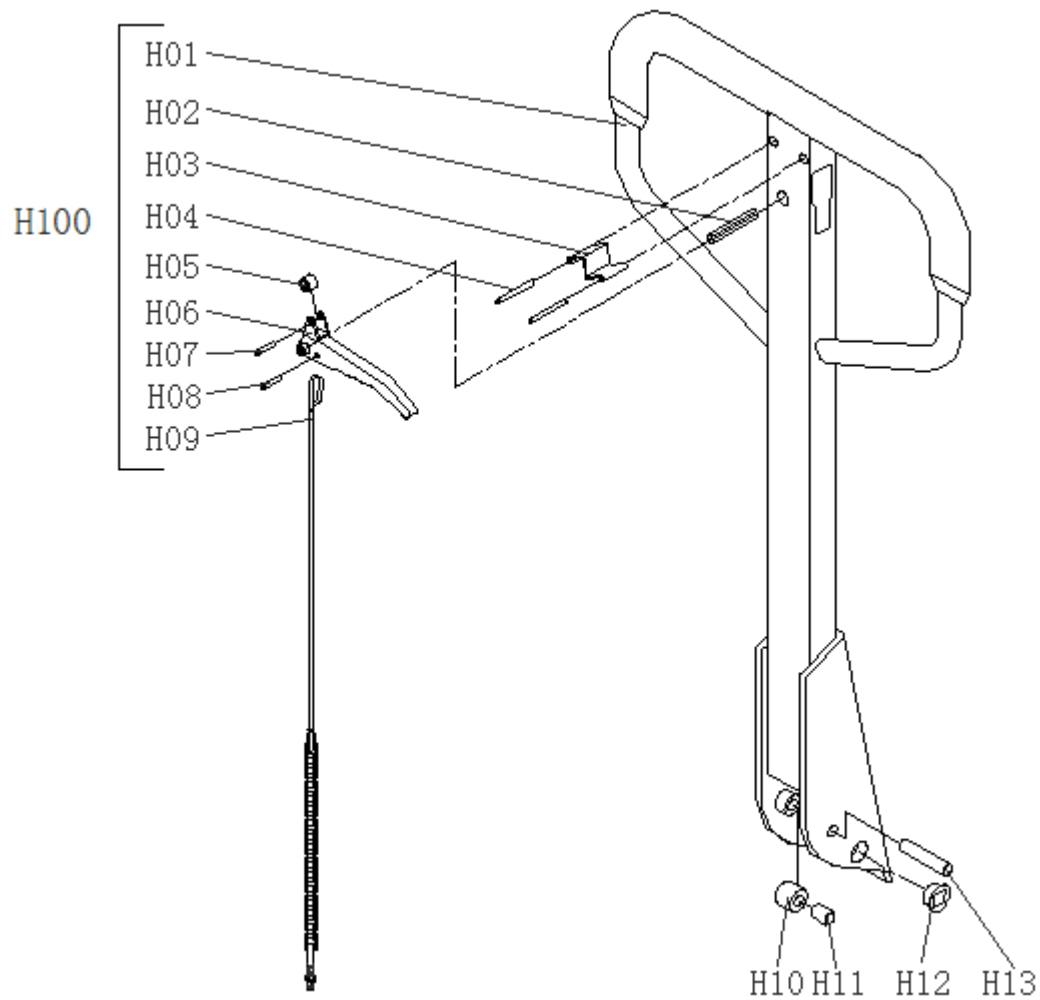
PARTS DRAWING OF PUMP ASSEMBLY



PARTS LIST OF PUMP ASSEMBLY

No.	Description	Q'ty	No.	Description	Q'ty
B01	Steel ball	1	B36	Steel ball	1
B02	Wheel jack	1	B37	Needle valve seat	1
B03	Dust ring	1	B38	Spring	1
B04	O-ring	1	B39	Governing screw	1
B05	Cylinder	1	B40	Bonded washer	2
B06	Sealing washer	1	B41	Screw	2
B07	Seal ring	1	B42	Valve spring	1
B08	Pump body	1	B43	Discharge valve shaft	1
B09	Axis pin	1	B44	O-ring	2
B10	The elastic pin	2	B45	The valve body	1
B11	Pin	1	B46	Crank link	1
B12	Screw	1	B47	Nutsert	1
B13	Bonded washer	2	B48	Adjust the screw	1
B14	Pressure spring	1			
B15	Ventileinheit	1	B101	Oil cylinder components	1
B16	Pressure valve body	1	B102	Pressure valve	1
B17	Steel ball	1	B103	Pump piston assembly	1
B18	Pump rod	1	B104	Steerable wheel assembly	2
B19	Spring cover	1	B105	Overflow valve	1
B20	Spring	1	B106	Bleed-offvalve	1
B21	Dust ring	1	B107	Pedal assembly	1
B22	Sealing ring	1			
B23	The valve body	1			
B24	The elastic pin	1			
B25	The elastic pin	1			
B26	Bearing	1			
B27	Retaining ring	1			
B28	Rhombus plate	1			
B29	The elastic pin	2			
B30	Movable pin	2			
B31	Trailing axle	1			
B32	Bearing	4			
B33	Polyurethane wheels	2			
B34	Retaining ring	2			
B35	Dust cover	2			

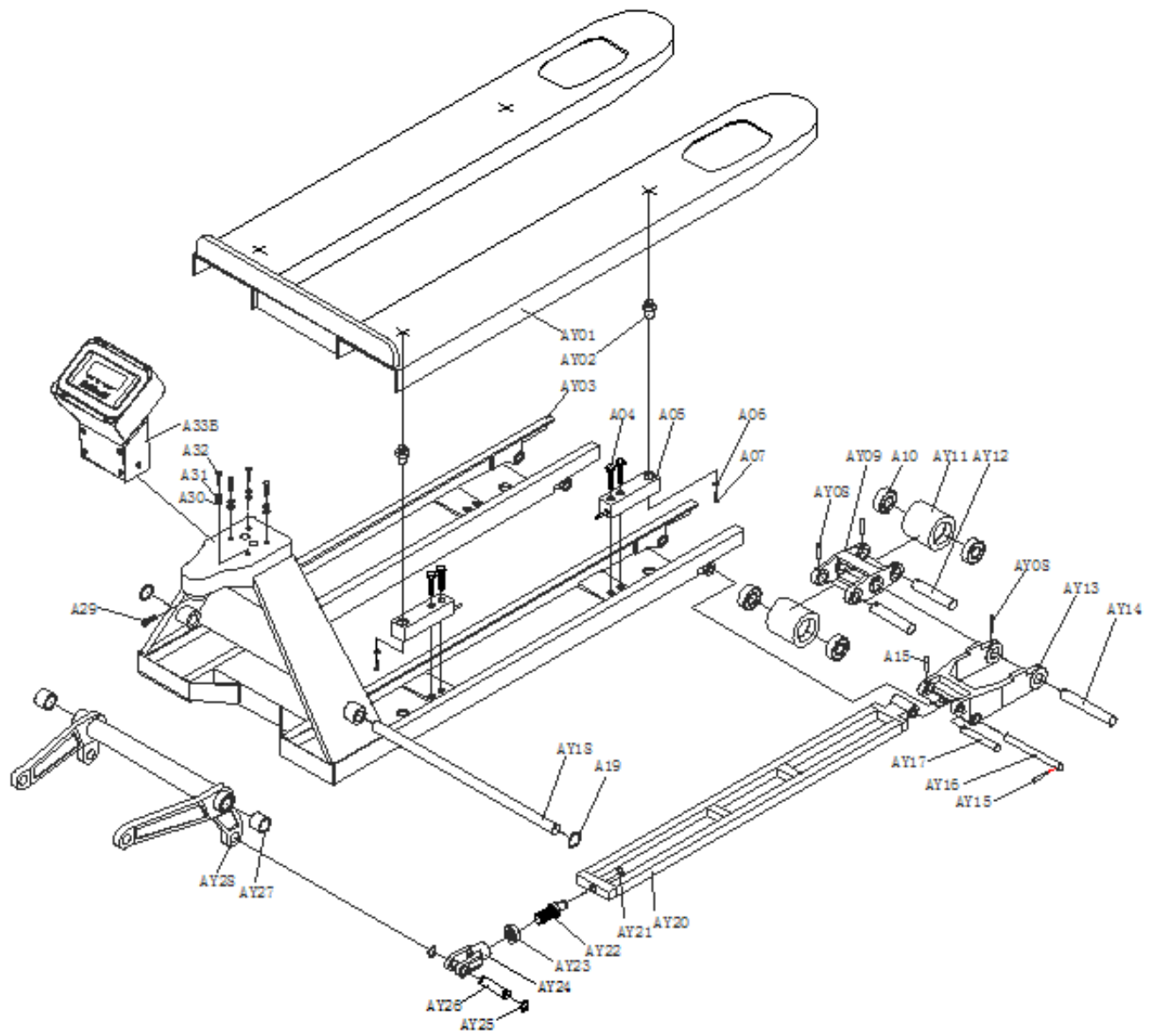
PARTS DRAWING OF HANDLE



PARTS LIST OF HANDLE

No.	Description	Q'ty	No.	Description	Q'ty
H01	Handle	1	H07	Spring pin	1
H02	Spring pin	1	H08	Spring pin	1
H03	Spring leaf	1	H09	Chain wire	1
H04	Spring pin	2	H10	Clanging roller	1
H05	Nylon roller	1	H11	Bushing	1
H06	Control lever	1	H12	Bushing	2
			H13	Axis	1

PARTS DRAWING OF FRAME

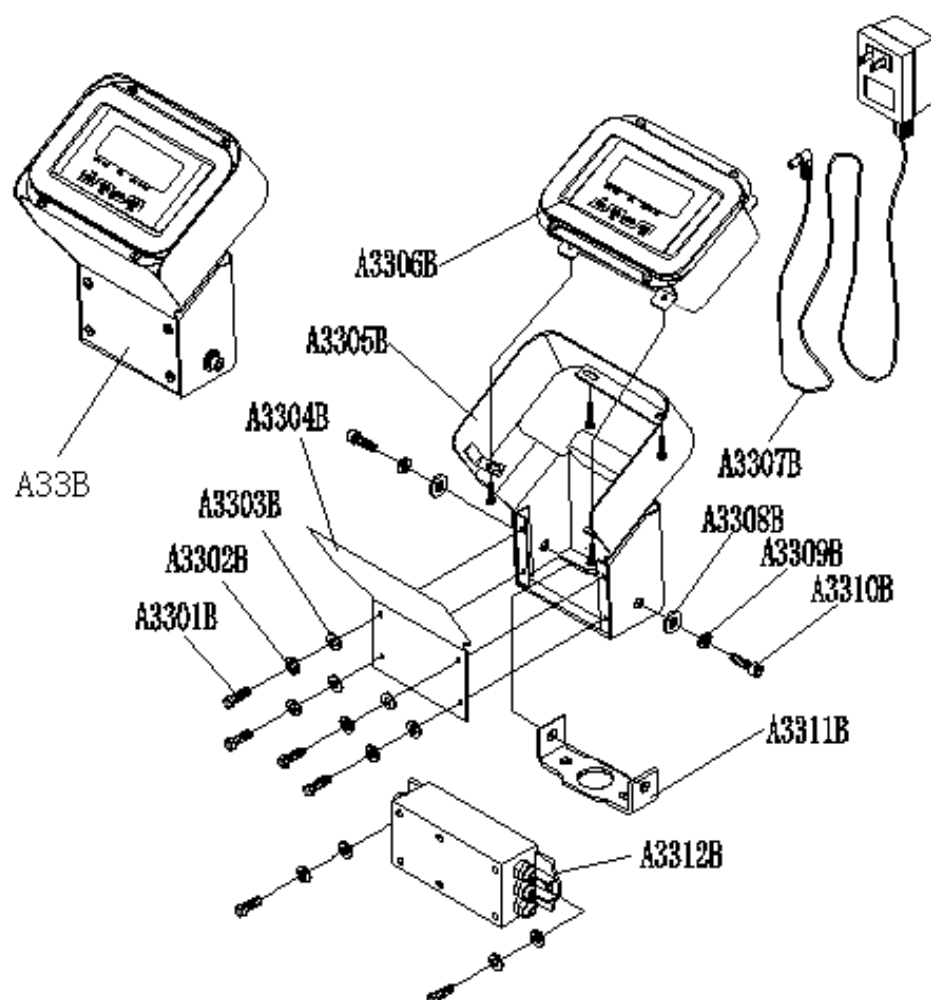


PARTS LIST OF FRAME

Part No.	Designation	Quantity	Part No.	Designation	Quantity
AY01	Weighing plate	1	AY18	The major axis	1
AY02	Positioning screw	4	A19	Ring	2
AY03	Frame	1	AY20	Pull rod	2
B04	Screw	8	AY21	The wire ring	2
A05	The weighing sensor	4	AY22	Screw shaft	2
A06	Spring washer	4	AY23	Nut	2
A07	Screw	4	AY24	Fork joint	2
AY08	Spring pin	6	AY25	Ring	4
AY09	The movable wheel frame	2	AY26	Joint pin	2
A10	Bearing	8	AY27	Bush	2
AY11	The wheel	4	AY28	Connecting rod	1
AY12	Wheel axle	4	A29	Screw	1
AY13	The swing wheel frame	2	A30	Washer	4
AY14	Shaft	2	A31	Spring washer	4
AY15	Spring pin	4	A32	Screw	4
AY16	Shaft	2	A33B	Instrument box	1
AY17	Pin shaft	2			

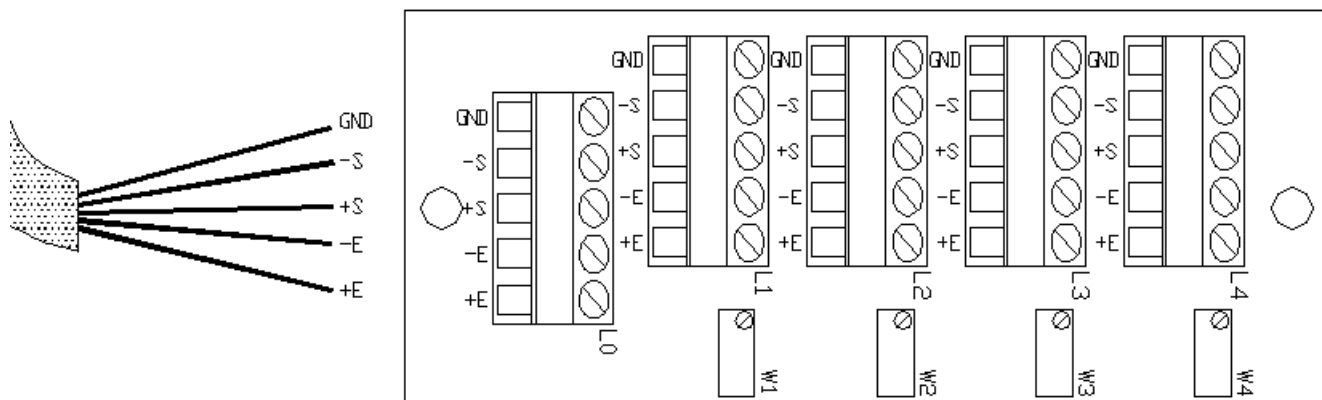
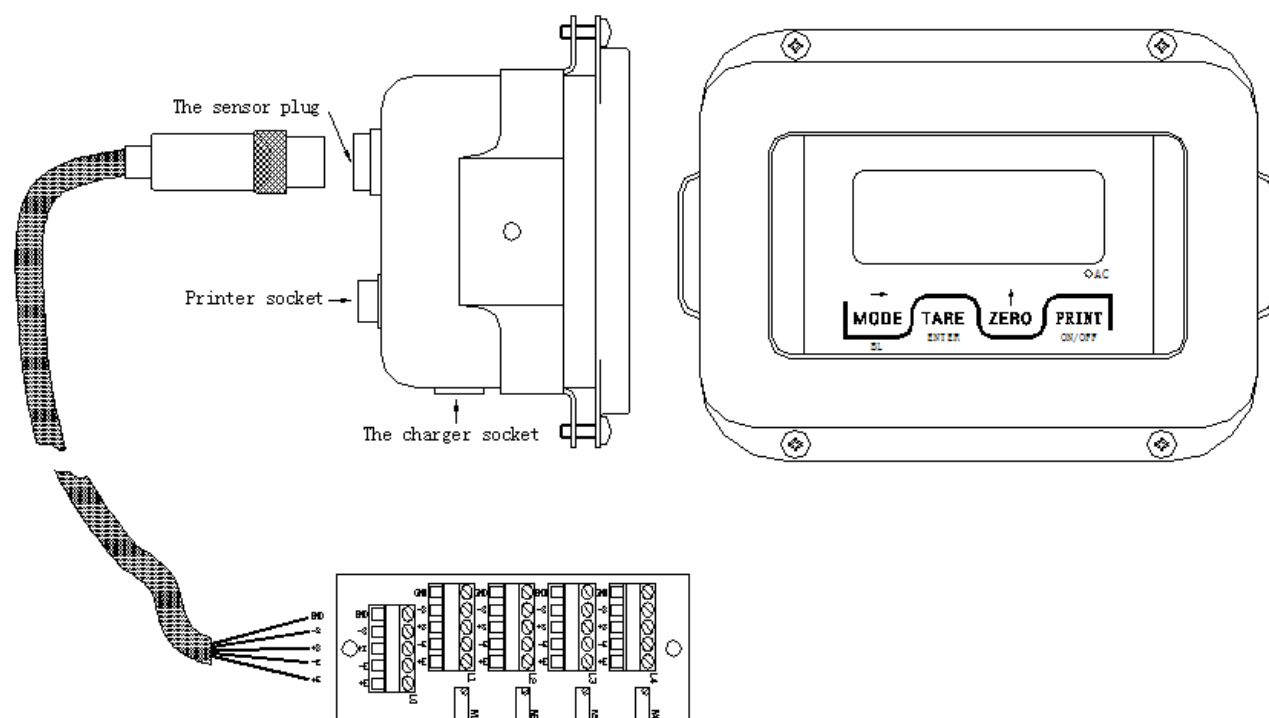
Note*: Quantity for tandem roller is 8, for single roller is 4.

Model B Instrument box



Part No.	Designation	Quantity	Part No.	Designation	Quantity
A3301B	Screw	10	A3307B	Power cord	1
A3302B	Spring washer	6	A3308B	Flat washer	2
A3303B	Flat washer	6	A3309B	Spring washer	2
A3304B	Cover plate	1	A3310B	Screw	2
A3305B	Instrument shell	1	A3311B	The connecting plate	1
A3306B	Weighing display	1	A3312B	Junction box	1

9. WIRING DIAGRAM OF SCALE, JUNCTION BOX, SENSOR



L0 —Connect meter connector	
GND	silver
—S	white
+S	green
—E	black
+E	red

L1~L4 Connect sensor connector	
GND	silver
—S	white
+S	green
—E	black
+E	red

10. CHANGING THE PAPER

10.1 Pull the lever to open the cover of the printer. Place the paper roll. Make sure the flap is at the top of the printer, facing towards you. Hold on to the paper when closing the printer. Push the cover closed firmly.

11. ROUBLE SHOOTING OF WEIGHING UNIT

NO	TROUBLE	CAUSE	SHOOTING
1	The instrument shows : OVER	-The load is too big for the scale	-Remove the load immediately.
2	Text is not printed clearly on the ticket	-Battery voltage is too low	-Charge the batteries.
3	The scale is not accurate	-The fork shoe is touching the bottom part of the scale -Cable in junction box is loose. -1 of the load cells is broken	-Remove anything that restricts the movement of the scale. -Check the connection in junction box after confirming safe. -Stand on the 4 corners of the scale. The load cell in the corner with a different weight should be replaced.
4	Indicator can't be turned on.	-Battery voltage is too low. -Battery life is complete. -Charger is damaged.	-Charge the batteries. -Replace rechargeable battery with new ones. -Check charger output voltage replace charger with new one.
5	Battery can't be charged.	-Battery is damaged. -Charger is damaged.	-Replace rechargeable battery with new ones. -Check charger output voltage replace charger with new one.