

---

## 41006003. - cubio mobile cabinet 50/50 (top tray)

### Short Description

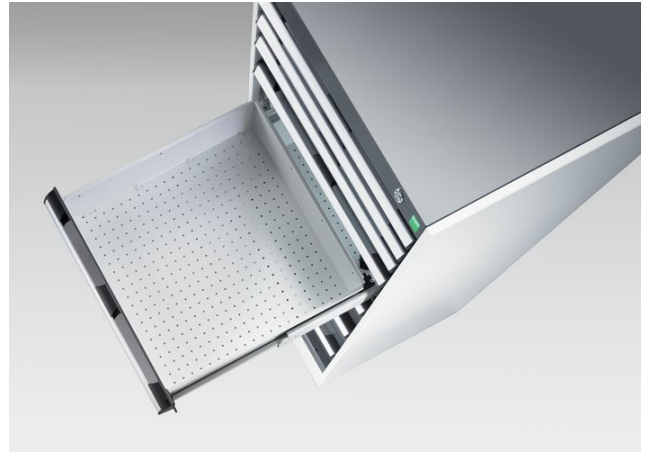
---

cubio mobile cabinet 50/50 (top tray) cupboard / cupboard WxDxH: 1050x525x885mm

### Product Images

---





## Additional Information

---

Description	cubio maintenance trolley with double cupboard & top tray with mat (525/525). Featuring a heavy duty, reinforced steel housing with double, independent, storage sections, push - pull handle and 125mm diameter castors. Double cupboard section with twin, reinforced, doors and 2 galvanised steel shelves (100kg U.D.L. per shelf. Finished in durable powder coat paint. WxDxH: 1050x525x885mm
Width	1050
Depth	525
Height	885
Customs tariff number	94032080
Product material	Sheet steel
Product surface	Powder coated
Drawer Load Capacity	50 kg
Door type	Perfo
Door height 1	600 mm

## Product Options

---

Colour:	Anthracite grey
	Crimson red
	Gentian blue
	Light grey