

---

## 40021041. - cubio drawer cabinet

### Short Description

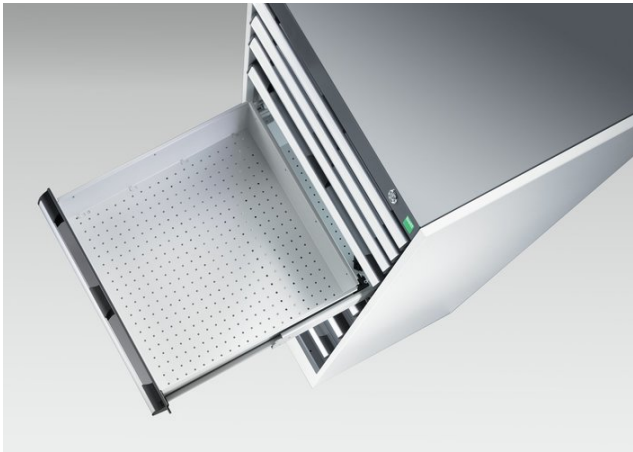
---

cubio drawer cabinet with 10 drawers WxDxH: 1050x650x1200mm

### Product Images

---





## Additional Information

Description	cubio drawer cabinet with 10 drawers. Featuring a heavy duty, reinforced steel housing with up to 1 tonne total capacity and heavy duty 100% extension drawers. Drawer configuration: 8x 100mm, 2x 150mm (75kg U.D.L.). Finished in durable powder coat paint. WxDxH: 1050x650x1200mm.
Width	1050
Depth	650
Height	1200
Customs tariff number	94032080
Product material	Sheet steel
Product surface	Powder coated
Drawer Load Capacity	75 kg
Drawer height 1	100mm
Drawer 1 Internal Dimensions	925mm x 525mm x 80mm
Drawer height 2	100mm
Drawer 2 Internal Dimensions	925mm x 525mm x 80mm
Drawer height 3	100mm
Drawer 3 Internal Dimensions	925mm x 525mm x 80mm
Drawer height 4	100mm
Drawer 4 Internal Dimensions	925mm x 525mm x 80mm
Drawer height 5	100mm
Drawer 5 Internal Dimensions	925mm x 525mm x 80mm
Drawer height 6	100mm
Drawer 6 Internal Dimensions	925mm x 525mm x 80mm
Drawer height 7	100mm
Drawer 7 Internal Dimensions	925mm x 525mm x 80mm
Drawer height 8	100mm

Drawer 8 Internal Dimensions	925mm x 525mm x 80mm
Drawer height 9	150mm
Drawer 9 Internal Dimensions	925mm x 525mm x 130mm
Drawer height 10	150mm
Drawer 10 Internal Dimensions	925mm x 525mm x 130mm

## Product Options

---

Colour:	Anthracite grey
	Crimson red
	Gentian blue
	Light grey