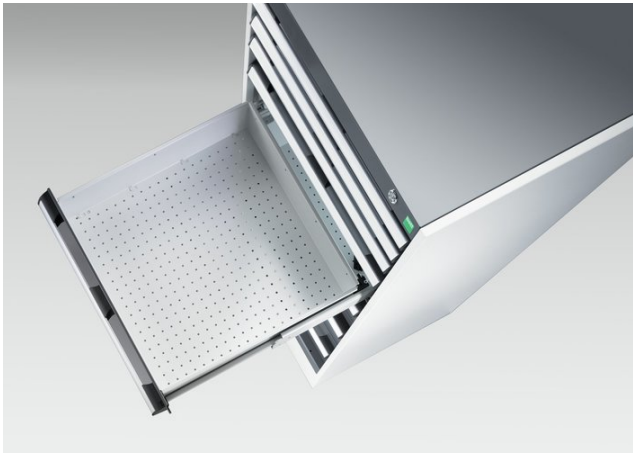

40012102. - cubio drawer cabinet

Short Description

cubio drawer cabinet with 8 drawers WxDxH: 800x525x1000mm

Product Images





Additional Information

Description	cubio drawer cabinet with 8 drawers. Featuring a heavy duty, reinforced steel housing with up to 1 tonne total capacity and heavy duty 100% extension drawers. Drawer configuration: 2x 75mm, 4x 100mm, 1x 150mm, 1x 200mm (75kg U.D.L.). Finished in durable powder coat paint. WxDxH: 800x525x1000mm.
Width	800
Depth	525
Height	1000
Customs tariff number	94032080
Product material	Sheet steel
Product surface	Powder coated
Drawer Load Capacity	75 kg
Drawer height 1	75mm
Drawer 1 Internal Dimensions	675mm x 400mm x 55mm
Drawer height 2	75mm
Drawer 2 Internal Dimensions	675mm x 400mm x 55mm
Drawer height 3	100mm
Drawer 3 Internal Dimensions	675mm x 400mm x 80mm
Drawer height 4	100mm
Drawer 4 Internal Dimensions	675mm x 400mm x 80mm
Drawer height 5	100mm
Drawer 5 Internal Dimensions	675mm x 400mm x 80mm
Drawer height 6	100mm
Drawer 6 Internal Dimensions	675mm x 400mm x 80mm
Drawer height 7	150mm
Drawer 7 Internal Dimensions	675mm x 400mm x 130mm
Drawer height 8	200mm

Drawer 8 Internal Dimensions

675mm x 400mm x 180mm

Product Options

Colour:	Anthracite grey
---------	-----------------

	Crimson red
--	-------------

	Gentian blue
--	--------------

	Light grey
--	------------